



L.A.CON IIII
Progress Report One

L.A. CON III

The 54th World Science Fiction Convention

August 29 - September 2, 1996

**Anaheim Convention Center
Anaheim Hilton & Towers
Anaheim Marriott**

**Writer Guest of Honor
JAMES WHITE**



**Media Guest of Honor
ROGER CORMAN**



**Fan Guests of Honor
TAKUMI & SACHIKO SHIBANO**



**Special Guest
ELSIE WOLLHEIM**



**Toastmaster
CONNIE WILLIS**

TABLE OF CONTENTS

Committee List-----2

Editors' Notes-----3

 Notes on the Orthography of L.A.con III -----3

Chairman's Message-----3

Mailing Address -----4

Guests of Honor-----4

 Fan Guests of Honor: Takumi and Sachiko Shibano-----4

 Toastmaster: Connie Willis -----4

 Special Guest: Elsie Wollheim-----4

 James White — Sector General -----4

 Roger Corman — Last of the "B" Kings-----5

Facilities-----6

 Dealers' Room -----6

 Art Show-----8

Volunteers Wanted!-----8

Membership Rates and Conversion Policies-----9

 Conversion to Attending Membership-----9

 LA in '96 Presupporter Membership Conversions -----9

 Changes of Address -----9

 Transfers -----9

Los Angeles: Home of Worldcons -----9

Welcome to Californial -----10

 Top 20 science fictional places you can see in LA today -----11

 Top 10 science fictional places in LA that don't exist anymore-----12

Programming-----15

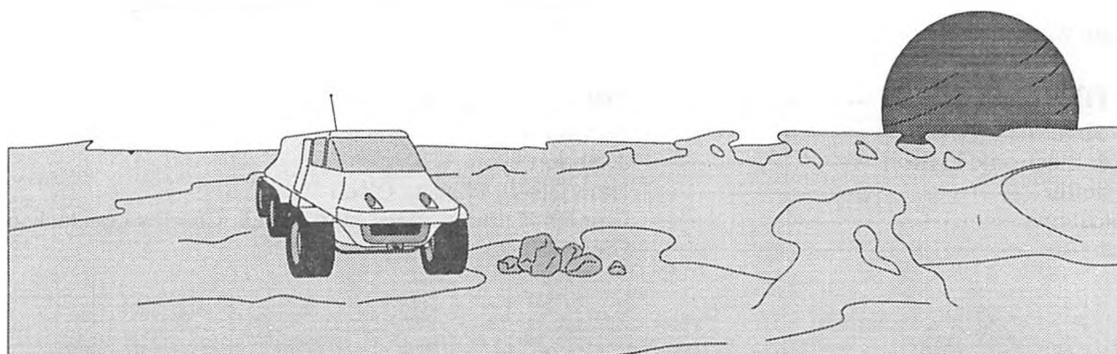
 Writers' Workshops -----15

Financial Report-----16

Ad Rates / Publishing Dates -----16

Membership List -----19

Index to Advertisers -----24



L.A.con III, c/o SCIFI, P.O. Box 8442, Van Nuys, CA 91409.

Service Mark Notice: "World Science Fiction Society", "WSFS", "World Science Fiction Convention", "Worldcon", "NASFiC" and "Hugo Award" are registered service marks of the World Science Fiction Society, an unincorporated literary society.

This publication © 1994 Southern California Institute for Fan Interests. Cover Art "The Rat Badge of Courage" © by Taral. Other illustrations courtesy of and © Bill Rotsler and Ellen Siders.

Progress Report One



COMMITTEE LIST

Chairman-----**Mike Glyer**
Committee Newsletter ----- Matthew Tepper

Vice Chair -----**Robbie Cantor**
Den Mother ----- Allan Rothstein

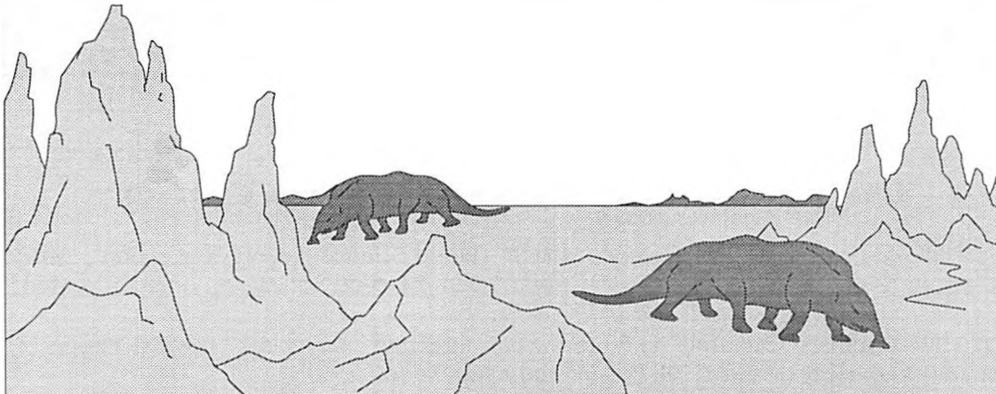
Administration Division Head -----**Elayne Pelz**
Logistics ----- Bob Null
Postmaster ----- Sandy Cohen

Facilities Division Heads -----**Bobbi Armbruster, Ben Yalow**
Art Show ----- Gay Ellen Dennett
Contractors' Liaison ----- Danise Deckert
Convention Center ----- Patti Wells
Exhibits ----- Joe Siclari
Government Agencies ----- Kurt Siegel
Huxters ----- Richard Spelman
Staff ----- Nancy Cobb, Doug Houseman, Gary Louie, Kim Marks, Wilma Meier, Sandy Rymer, Michael Siladi, Edie Stern

Kitchen Sink Division Head -----**Bruce Pelz**
Assistant Division Head ----- Drew Sanders
Masque ----- Kathy Sanders

Programming Division Head -----**Craig Miller**
Assistant Division Head ----- Noel Wolfman
Childrens ----- Karen Willson, Chris Weber
Filk ----- Rick Weiss, Deborah Weiss
Films ----- Michael Donahue
GOH & VIP Liaison ----- Genny Dazzo
Program Development ----- Craig Miller, Arthur Byron Cover, Genny Dazzo, John Hertz, Rebecca Lilienfeld, Bill Warren, Noel Wolfman
Writers Workshop ----- Adrienne Foster

Services Division Head -----**Dan Deckert**
Con Suite ----- Ed Green
Info & Electronic Liaison ----- J. Shaun Lyon
Newsletter ----- Mark Olsen, Priscilla Olsen
Publications ----- Charles Matheny, Mary Jane Jewell, Charles Lee Jackson II
Sales ----- Glenn Glazer



EDITORS' NOTES

Progress Report 0 was the creative product of Mary Jane Jewell and Charles Matheny. With PR1, Charles Lee Jackson II joins the team, developing features and contributing his editorial skills.

In this PR we've started a cycle of Quest of Honor highlights, with each issue emphasizing articles and artwork about another of L.A.con III's guests. Do you have any ideas for paying tribute to our guests? The field is wide open. Past Worldcon publications, for example, *Magicon's* progress reports, received some excellent articles from knowledgeable fans who were devoted to the art or writing of the convention's guests.

We are also asking artists to contribute spot illustrations for use in L.A.con III progress reports. (Rats... We need *lots* of rats!)

Please submit artwork and text to Charles Lee Jackson II at the convention P.O. box.

Notes on the Orthography of L.A.con III

Like the old comedy routine, you can call us LAcon III, or you can call us LAcon 3, or you can call us LA3, or you can call us the '96 worldcon — though we'll keep calling ourselves L.A.con III, because it's a small thing we can do to make worldcon historian Fred Patten happy. Fred would hate to see us stray from the tradition created by L.A.con I in 1972!

CHAIRMAN'S MESSAGE

by Mike Glyer

Shaken, But Not Stirred?

Right! Since the January quake Los Angeles has hardly been the place to be mixing James Bond-recipe martinis. Some of our committee members were hard hit — quake damage forced Mary Jane Jewell and Charles Matheny out of their home, levelled the Pelz's back fences and necessitated house repairs plus a crew to pick up a fannish life's worth of collections, a job that must feel as if it's only begun. There have been thousands of smaller followup quakes, aftershocks. As Scott Welch says, "There were times when someone moved in your vicinity and you weren't sure if it was their heavy foot or.... another one of 'those'."

The convention facilities in Anaheim, 35 miles away from the quake epicenter, had no problems. People are recovering — so well that Progress Report One has actually resumed its place as a priority!

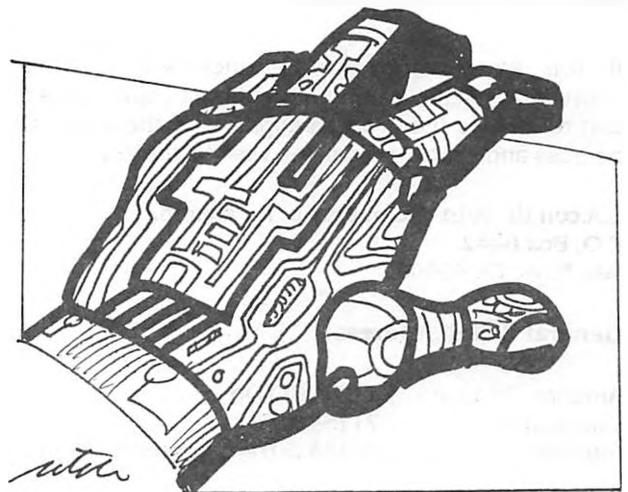
The Voice of Imagination

We're listening to it more carefully than ever, you know, in this era when good ideas are at an even greater premium than the technical means of realizing them. For example, Worldcons now use professional facilities which our improvisational experience at local conventions barely prepares us to exploit.

In the days when Forry Ackerman called his fanzine *Voice of Imagination*, radio literally supplied many voices of imagination, echoing for an electronic age a tradition even older than *Henry V's* invitation to suppose the cockpit of the Globe Theatre contained the "vasty fields of France."

I've read that advances in entertainment technology have threatened to improve out of existence any need for people to engage in lively interaction with the stories played for their amusement, but I don't believe that anymore. A generation of scholars suspected television would supply so much more sensory information than radio that viewers would simply sit in anesthetized passivity. They'd have to give up that idea if they heard fans dissecting *Star Trek: The Next Generation* episodes, and learned how many others expand that universe by adding stories of their own. I believe each leap forward in entertainment technology has been paced by fans' passion for stories that fully utilize the medium.

Worldcons presented in convention centers are not one medium, but a bundle of technologies and media that free us from the former limits of hotel ballrooms and classroom-style meeting rooms. We have only to decide what new things we want to do. What do *you* want to do? Please add your voice of imagination to the dialog — what should be tried at opening and closing ceremonies, as a program, at child care, in the registration line, around the concourse...?



Progress Report One



GUESTS OF HONOR



Financial Policy

Isn't it a bit premature to be talking about L.A.con III profits? Probably, although years after Robert Taylor helped run the 1985 NASFiC in Austin he offered his tongue-in-cheek advice that one of the first things a new chairman should do is sit his committee down to watch *The Treasure of the Sierra Madre*, and when the lights came on have them set the con's policy for disposing of any profits. He agreed with the film's lesson that people make wiser choices before they get the gold in hand.

I'm only raising this subject because I know some of the people thinking about volunteering will want to know our policy. It is this: Like Noreascon 3, ConFiction, MagiCon and ConFrancisco, our worldcon will distribute one-half its profit to the worldcon committees for 1997-1999 that adopt a comparable policy.

But we have two other commitments that are even more important. In the area of finance, L.A.con III's first commitment is to draft a proper budget and operate within it. Its second commitment is to wisely spend as much of its income on the convention as possible.

MAILING ADDRESS

If you have comments or questions about the convention, please write to us. We will copy your letter and route it to the proper people. Use the committee address and specify whom you wish to contact.

L.A.con III, (Attn. Membership, for example)
P.O. Box 8442
Van Nuys, CA 91409.

General E-Mail Address

America On-Line: JSHAUNLYON
CompuServe: 71154,307
Internet: 71154.307@compuserve.com

Fan Guests of Honor: Takumi and Sachiko Shibano

Takumi Shibano said that in 1939, when he read H. G. Wells' *War of the Worlds*, "The idea that humanity might not be the lords of creation shocked this junior high school boy." The Shibanos' long-lived fanzine, *Uchujin*, is credited with the birth of Japanese fandom. They are now fixtures at the Worldcon, seen presenting Seiun Awards (the Japanese Hugos) to overseas winners. Recently, Takumi concluded, "Nationality doesn't matter now. I just think of myself as a fan."

Toastmaster: Connie Willis

Not only have fans acclaimed and awarded Connie Willis's science fiction stories, but they have often heard her quick wit and gift for public speaking on display at conventions. In a recent interview, she said, "The time is ripe for comedy. It's the best of times and the worst of times. There's all this great material, but no one has a sense of humor about anything. We really are Victorians now — it's so distressing."

Special Guest: Elsie Wollheim

Elsie Wollheim's life and career in science fiction and her life in science fiction encompass more than half a century. From the Futurians of the 1930s and 1940s to the DAW Books of the 1970s and beyond, she has been a Presence in the vortex of our field that is New York.

James White — Sector General

an introduction by Lynn Maners

James White has had quite a number of productive years as a professional author. Beginning his career in 1952, his first sale, the 8000-word "Assisted Passage", appeared in the British SF magazine *New Worlds*. His 81st and most recent work, *The Backward Magician*, becomes part of a body of work which includes 14 novels and eight short-story collections. His novella, *Second Ending* (1962), was nominated for a Nebula award.

A considerable number of White's works focus, either wholly or in part, on aspects of medical practice among alien species and their interactions. Others, like *All Judgment Fled*, are novels of first contact. In this way, his stories reflect the science-fiction reader's continuing appetite for puzzle stories. Whether they involve a question of physics, psychology, political science, or improbable biology, White's puzzles often deal with aliens and how one treats apparent illness.





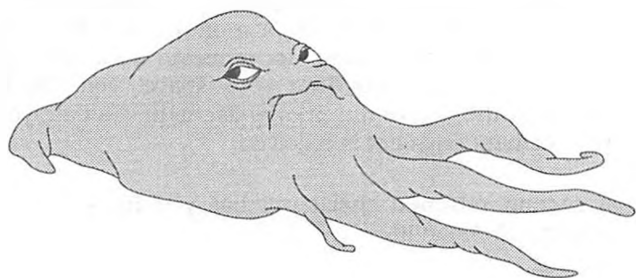
Indeed, some of the best stories revolve around questions of whether an unconscious/uncommunicative alien is actually ill at all. In these cases, the appropriate treatment may be no treatment.

White's main protagonist, Dr. Conway, is assigned to an orbital station, the eponymous Sector General, from which most story situations arise (unlike the peripatetic Dr. Calhoun of Murray Leinster's medical SF stories). Throughout the Sector General series, beginning with "Medic" in the collection *Hospital Station*, we follow the career of Dr. Conway and his interactions with fellow staff members, both human and non-human. Conway's non-professional and romantic side is illustrated through his continuing relationship with Nurse Murchison.

Although the Murchison/Conway relationship may seem a bit quaint and old-fashioned from our coign of vantage in the 1990s, White's characters always seem like real people who could exist outside the world of our imaginations. Conway's alien co-workers in Sector General are likewise well painted for us. Who can forget the fragile empath, Prilicia, hovering over a violently trashing patient, or the absent-minded bumbling of a Tralthan diagnostician as other staffers hug the walls to avoid being unceremoniously squished?

White's Sector General stories also pioneered the use of diagnostically oriented personality tapes, as well as the use of an alphabetic code in order to classify aliens by their basic physiological requirements. In the case of diagnostic tapes, a doctor confronted with a species with which he is not familiar need only see the hospital's chief psychologist in order to have the personality and associated knowledge and experience of a leading specialist of the target species superimposed over his own personality. Inter-species diagnosticians are allowed to retain these tapes for long periods, a device which is used to account for their eccentricities, such as the times at meals when the only thing that all the personalities can agree on is a salad. Until the publication of Sector General stories, the idea of a superimposed personality or shared consciousness was generally used in a negative way, as in stories of alien possession.

To conclude the Sector General series, White has promised that a new novel, working title *Final Diagnosis*, will have appeared before L.A.con III.



The Sector General Series

Hospital Station (c)
Star Surgeon (*)
Major Operation (c)
Ambulance Ship (c)
Sector General (c)
Star Healer (n)
Code Blue — Emergency (n)
The Genocidal Healer (n)
The Galactic Gourmet (n)

(c) = short-story collection; (n) = novel; (*) = novelization of stories in *The Aliens Among Us*

Roger Corman — Last of the "B" Kings

Introduced by Charles Lee Jackson, II

Our Media Guest of Honor is a man who is, not unreasonably, proud of his work in the Picture Business. In the last days of the era of the "B" picture, he knocked out a large number of cheapie-quickies that have out-lived the films they supported on those double bills.

On a Corman picture, a tiny budget and a three-day shooting schedule were not limitations but challenges. *Attack of the Crab Monsters*, though almost painfully inexpensive, is a clever feature, and is fun to watch. *A Bucket of Blood* and *The Little Shop of Horrors* are regarded today as classic spoofs of the horror genre, though each was produced in the expectation of a six-month life-span, followed by oblivion.

Though he graduated with an Engineering degree, and studied English Literature at Oxford, it was his stint in the Twentieth Century-Fox mail room that foretold his life's work. He started his creative career as a writer, but soon moved on to production and direction with a pair of 1955 B-westerns. Presently, he moved out to conquer other genres, soon directing his first SF feature, *The Day the World Ended*.

No one in those days took him seriously — except his investors and distributors, who made tidy sums from his films — until the B-picture died out in the early sixties, and Corman made the transition into larger budget, color films, beginning with *The House of Usher* in 1960, and including A-I-P's "Edgar Allen Poe" series, which kept the wonderful Vincent Price working in star vehicles for a decade.

Corman's ventures grew with the times, but his films became so elaborate that they were no longer so much fun to make, so he gave up directing, and became a major producer and American distributor of foreign films. Roger Corman's name became associated with the likes of Kurosawa, Bergman, and Fellini.

Progress Report One



During his career, he was also the discoverer or developer of numerous up-and-coming talents, such as young Francis Ford Coppola (whose first film, backed by Corman, was an eerie thriller entitled *Dementia 13*), Peter Bogdanovich, and Martin Scorsese.

As director, producer, studio boss, and Hollywood mogul, Roger Corman has entertained us with horror, SF, comedy, action, exploitation and weird cross-over pictures for more than a generation. It is fitting and proper that he be a Worldcon Guest of Honor.

FACILITIES

Bobbi Armbruster and Ben Yalow have completed negotiations with the Anaheim Hilton and Towers to be L.A.con III's headquarters hotel, and also for the Anaheim Marriott's rooms and function space to be at our disposal.

Our other facility is the Anaheim Convention Center where we held the largest Worldcon ever, in 1984. We plan to use one or more of the exhibit halls plus program rooms and the arena. Our version of the Concourse will begin just beyond the Convention Center's North Lobby (the one nearest the Hilton) with access to the Dealers Room, Art Show and Exhibits.

It's just a two-minute walk to the Anaheim Hilton from the Convention Center. L.A.con II attendees will remember that the Hilton's fifth floor suites open onto a common outdoor area, creating a communal, midsummer night party atmosphere. The Anaheim Marriott flanks the Hilton and was successfully used as the site of the 1989 Westercon. Both the Hilton and the Marriott have full ballroom and meeting facilities, offering a lot of flexibility for programming, special interest meetings, dances, and late-night events.

Dealers' Room

The L.A.con III Dealers' Room will consist of a mix of three hundred 8'x30" tables and 10'x10' booths in one of the large halls of the Anaheim Convention Center. Tentatively, there will be 20 to 30 open-cornered islands in the hall. Due to the size of the hall, wall tables will be available only if the room is divided by curtain and stanchion barriers. The price to each dealer for his first two tables will be \$125 each. The third and fourth tables will be \$175 each with any additional tables costing \$225 each. Prices for booths have not yet been set.

Merchandise

L.A.con III is the World Science Fiction Convention and, as such, all merchandise should be related to science fiction, fantasy or horror. We reserve the right to deny

table space to any dealer whose merchandise, in our sole opinion, is inappropriate, objectionable or in violation of copyright laws. For the convenience of the members of L.A.con III and other dealers, video displays and all audio products must be demonstrated using headphones.

Initial Request Period

All space requests received by October 1, 1994 will be considered as received on that date. You may request up to four (4) tables and/or booths and enclose a deposit of \$50.00 per table or booth with your request. If you would like more than four (4) tables and/or booths, please enclose a note justifying your need for up to two (2) additional tables and/or booths plus a separate deposit for each. If space is still available after satisfying all persons requesting up to four (4) tables and/or booths during the initial period, additional space will be allocated, at the sole discretion of the Dealers' Room Manager, to persons requesting more than four (4) tables and/or booths.

A priority number for selecting your location will be assigned by lottery. Assuming there is sufficient time after all approvals have been received for the layout of the Dealers' Room, you will be sent a map of unassigned space to select your own location by priority number. If you have reserved three or more tables and/or booths you will be asked to select a corner location. The Dealers' Room Manager reserves the right to assign locations to ensure balance to the room.

Subsequent Requests

If it is received after October 1, 1994, your request will be assigned a priority number as of the date received. The maximum number of tables and/or booths will be three and your deposit must accompany your request. You should receive confirmation of the availability of space or notice of your position on a waiting list within two to three weeks of receipt of your request. Depending on timing, you may have an opportunity to select your own location.

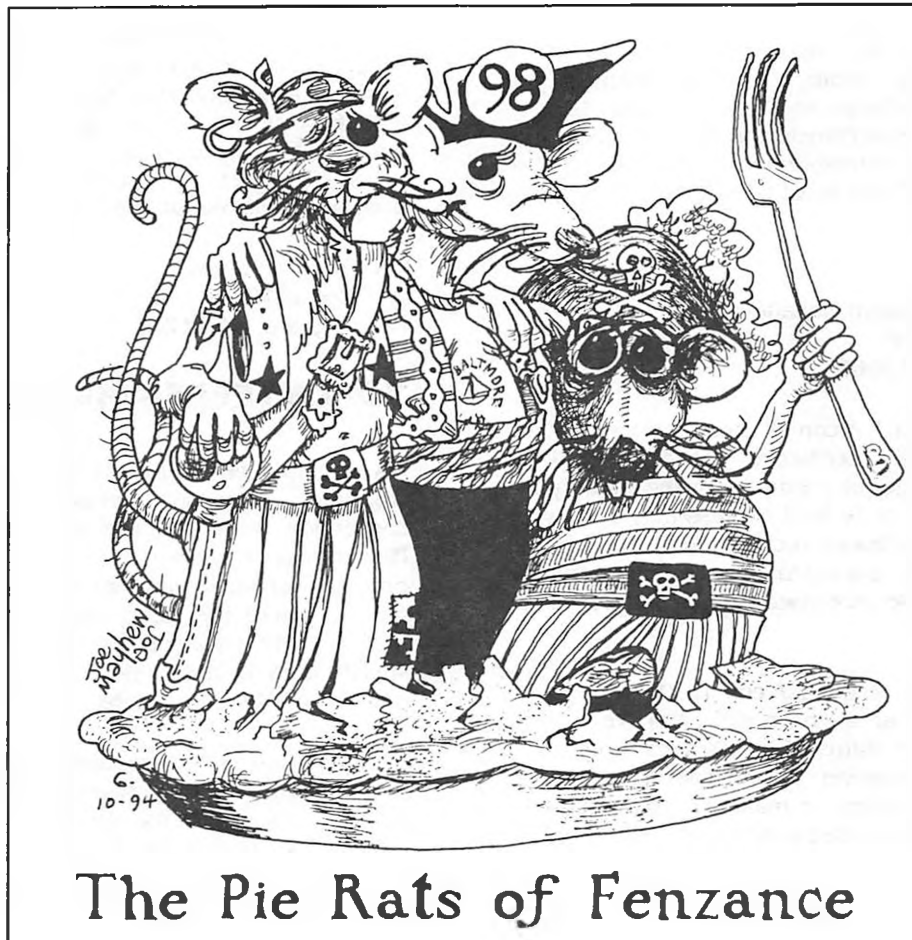
Returned Check Policy

Should your deposit or final payment check be returned by your bank unpaid, you must send a replacement cashiers' check or money order, including a \$15.00 service charge, to reinstate your request. Although you will not lose your space, you will be placed at the end of the priority list as of the date your replacement payment is received.

A second returned check will bar you from being a dealer at L.A.con III.



A Worldcon For Our Reasons (Pirates Too)



The Pie Rats of Fenzance

Baltimore in 1998

**Congratulations to the
Los Angeles Worldcon Committee
for winning the 1996 Worldcon bid.**

Baltimore Worldcon 1998, Inc.
P.O. Box 1376, Baltimore, Maryland 21203

baltimore98@access.digex.net

Any resemblance between this ad and ads produced by a certain past Worldcon bid committee is strictly intentional. We are pirates, it's our job. Besides, we'll all orphans.

Progress Report One



Administration

The L.A.con III Dealers' Room will be run by the experienced dealers' room staff who brought you Magicon, Chicon, Nolacon and Confederation, headed by Dick Spelman, Steve Francis and Jeff Lockridge. For faster processing, correspondence concerning the L.A.con III Dealers' Room must be sent to the following address:

Dick Spelman
L.A.con III Dealers' Room Manager
8111 Timbertree Way
West Chester, Ohio 45069

Mail forwarded from L.A.con III Headquarters will be processed only when received at the above address and may result in inferior positions on the waiting list. Use of certified mail or Federal Express may delay your request since I often travel to conventions and am not home to sign for documents. Letters requiring signatures will not be processed until actually received by me.

You may see some of the L.A.con III Dealers' Room management team at a convention and we will be happy to discuss the status of the Dealers' Room with you. We will not, however, accept space requests or payments at these times or make any commitments since they may be misplaced during our travels and not properly recorded.

Memberships

Each dealer and helper must be an attending member of L.A.con III. Please indicate your membership number on your space request or enclose separate payment for at least one attending membership. The fee through August 15, 1994 is \$75.00. Since membership fees increase periodically as the date of the convention approaches, I recommend you purchase memberships for your helpers early.

Final Payment

Final payments must be postmarked January 1, 1996 or the date specified in your notice that space is available, whichever is later. Failure to make such payment on time may result in the cancellation of your location and/or reservation.

Dick Spelman,
Dealers' Room Manager

Art Show

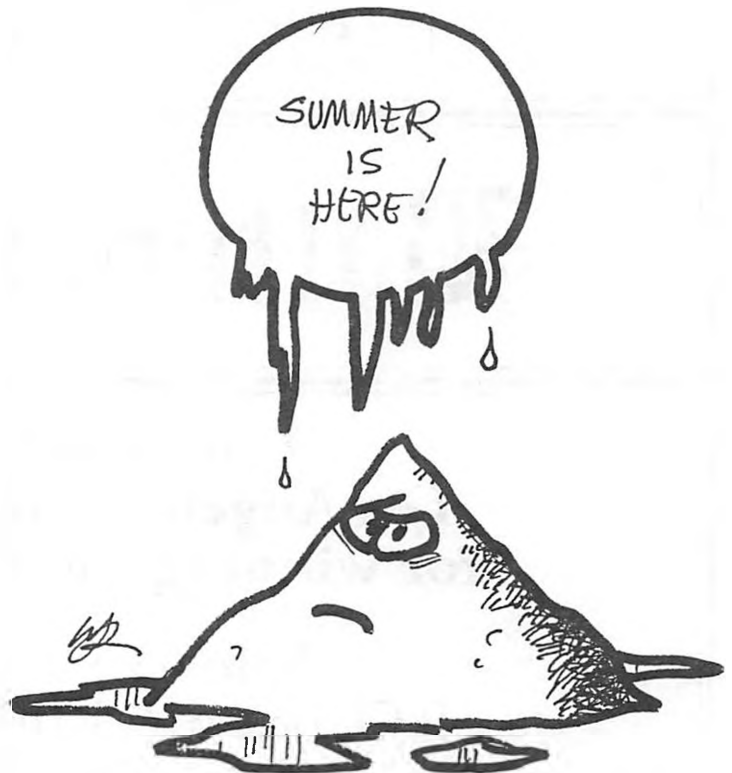
The Art Show at L.A.con III is in the capable and experienced hands of Gay Ellen Dennett & Crew, of Boskone and Noreascon fame. At this early date, the Art Show is not yet assigning space, and the fee structure has yet to be set. If you wish to be placed on the mailing list for Art Show information when it becomes available, please write to:

L.A.con III Art Show
P.O. Box 1010
Framingham, MA 01701

VOLUNTEERS WANTED!

L.A.con III needs *your* help to run a successful Worldcon! It doesn't matter if this will be your first convention, or if you are an experienced old hand. Please volunteer for a few hours. Worldcons are not only run for fans, they are run **entirely** by volunteer fans. If you're interested, write to us at the committee mailbox. Tell us if you are interested in working for a specific area, or have a particular expertise. We try and match our jobs to your interests.

We thank those who have already offered their services. If we have not already replied to you about a specific job, we will soon, as our committee identifies the needs in each department.



**MEMBERSHIP RATES AND
CONVERSION POLICIES**

Changes of Address

Please let us know when you move so that L.A.con III publications will be there when you arrive! Send your change of address to L.A.con III c/o SCIFI, P.O. Box 8442, Van Nuys, CA 91409.

Transfers

Did you finally decide who's using your "Guest of Joe Blow" memberships? Or, can't make it to L.A.con III but know somebody who can use your membership? Easily handled: Send us a letter with your name and membership number — the number is on your mailing label — telling us you are transferring your membership to someone else. Give the recipient's name and address so we can send him or her the convention publications. We will transfer memberships only with your written and signed authorization.

**LOS ANGELES:
HOME OF WORLDCONS**

Part one of five
An Introduction by Charles Lee Jackson, II

With a frequency alarming to fans around the globe, the World Science Fiction Convention returns to the LA area every twelve years or so. From the early days just after the Second World War to today, an LA Worldcon has always been a major event, even among major events. And whenever the Worldcon is in the Los Angeles area, you can be sure the LASFS has been involved. The LA Science Fantasy Society, this world's oldest SF club, has long maintained a high profile in the fan community.

The Pacificon, in July 1946, marked not only the premiere of LA Worldcons, but a return to fannish normalcy after the hectic days of the War. Held at Parkview Manor, a two-story meeting hall a short walk from the LASFS clubhouse, the con honored Guests A.E. van Vogt and E. Mayne Hull. All of the divergent factions within the club joined behind chairman Walt Daugherty to make Pacificon a hit.

During the nineteen fifties, "South Gate in 'Fifty-eight", which began as a joke, became a rallying cry for the next LA Worldcon, the Solacon. Though the con site, the Alexandria Hotel, is located in downtown Los Angeles, a joint proclamation by the mayors of LA and South Gate declared the building part of South Gate for the duration of the event. The con marked a return for LASFS to the mainstream of fandom after years on the fringes. Chair Anna Moffatt led the membership in honoring Guest Richard Matheson.

Attending	Until 15 August 1994: From 16 Aug. 94 to 30 June 95 After 1 July 95	\$75.00 \$90.00 More
Supporting		\$30.00
Kid	(age 3-12 as of 29 August 1996)	\$35.00*
Infant	(age less than 3 years as of 29 Aug. 96)	Free

* Kid Memberships will entitle the holders to some number of hours of free Child Care service at the convention. Additional hours will be available at our cost. The exact number of free hours cannot yet be determined.

Conversion to Attending Membership

A Supporting membership may be converted to an Attending membership by paying the difference between the Supporting price (\$30) and the Attending membership rate at the time of conversion. If you plan on attending L.A.con III and currently have only a Supporting membership, you should consider converting it at this time since the rates will continue to increase.

**LA in '96 Presupporter Membership
Conversions**

If you were (1) an LA in '96 presupporter, (2) a 1996 Site Selection Voter and (3) have 20 bid stickers in your booklet, then you get a full attending membership without paying any conversion fee. (Note: Any policy applying to presupporters also applies to "preopposers".) (If you have less than 20 stickers, see about partial credit at the end of this article.)

L.A.con III has been redeeming sticker books on site at a number of 1994 conventions to save many people from mailing them back and forth. **We'll also redeem by mail through August 15, 1994 via the SCIFI post office box.**

Partial credit for incomplete sticker books: For presupporters who vote in Site Selection, there will be the following discounts. Those with five or fewer stickers in their books, will get \$5 off the conversion fee. Presupporters with 6-19 stickers will be credited \$1 per sticker.

No matter what the date, Pre-Supporters (and Pre-Opposers) get a \$5.00 discount on their Memberships.

Progress Report One

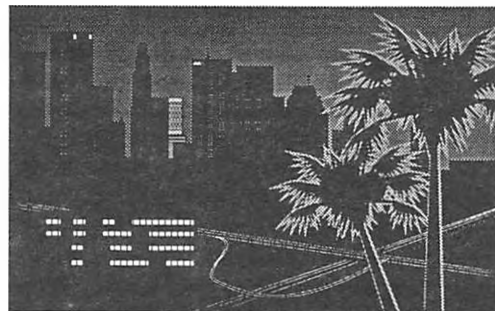


In 1972, just a little behind the usual twelve-year cycle, the thirtieth Worldcon, L.A.con, was the first World SF Con to boast over 2000 members. Chaired by Bruce Pelz and Chuck Crayne, it was held at the International Hotel near the LA International Airport. Frederik Pohl was Guest of Honor, and fan guests were the Coulsons, Buck and Juanita.

L.A.con II, in 1984, was a monster of a convention, filling the Anaheim Convention Center and adjacent Anaheim Hilton and Towers, and was sponsored by the Southern California Institute for Fan Interests, SCIFI, with a committee chaired by Craig Miller and Milton F. Stevens. Guest of Honor was author Gordon R. Dickson and super-fan Dick Eney was Fan GoH, though it wasn't his fault.

And now we're looking at L.A.con III, next in the series of LA Worldcons.

But these are the bare bones, the mere statistics and broad observations of our history. In future Progress Reports, some of LA's biggest BNFs will dish the dirt and deliver the details on Los Angeles Worldcons.



WELCOME TO CALIFORNIA!

by Mike Glyer

Los Angeles not only pulses to the rhythms of work and play, like any urban center. Its very business is fabricating fresh realities. Anyone who grows up in this place intuitively prepares himself to be either a science fiction fan, or a movie fan, or both.

Route 66, a weekly tv series in the 1960s, routinely shot location footage near the San Fernando Mission, just a couple of miles away from my elementary school. The series focused on two adventuresome, hip guys roaming the Southwest in their ragtop sports car. None of the locations ever seemed to be on Route 66, said the adults I knew, and that kind of secret knowledge appealed to me. I wondered, how many other scenes from my everyday life were being passed off in movies as Texas, New York City and Morocco?

Fans of science fiction movies and tv shows will find the streets of Los Angeles an ongoing trivia quiz if they know where to look, and helping L.A.con III members to find some of the most interesting places is the purpose of this article. When such notes of interest involve places worth seeing in their own right, the experience of visiting them is made that much more enjoyable by knowing the story.

I mean, it's nice to know that the *Leave It To Beaver* house is at 1727 Buckingham Road, that the set for D.W. Griffith's *Intolerance*, the largest film set ever built, was at 4500 Sunset Boulevard, or that the furniture factory at 16217 Lindbergh Street is where Bogart and Bergman filmed the famous closing scene of *Casablanca*, but I don't envision someone getting into a car and going to see these places. So I've concentrated mainly on places that a visitor would be interested in seeing even if it had no association with science fiction or the movies. Most of these places can be visited without charge, too, a prospect warming to a fan's heart!

(Hundreds of examples of where to find famous movie locations are listed in *The Ultimate Hollywood Tour Book* by William A. Gordon. Gordon's paperback is the source for about one-third of the following list.)

MARGARITA JELL-O

THIS IS AN ALCOHOLIC DESSERT. Use one large box or 2 small boxes of Lime Jell-O gelatin dessert. Add 2 c. boiling water to gelatin. Stir until dissolved, about 2 minutes. Add 1¼ c. cold water, ½ c. Tequila, and ¼ c. Triple Sec. Chill until set. Makes 8 servings, ½ c. each, or 16 little Dixie Cups. ☞^{101*} Variation: use Strawberry Jell-O or Strawberry-Banana Jell-O, substitute fresh Lime Juice or Lime Lizzard Schnapps for ¼ cup of the water.

MAY CAUSE DROWSINESS. (1) According to the Surgeon General, women should not eat alcoholic Jell-O during pregnancy because of the risk of birth defects.

(2) Consumption of alcoholic Jell-O impairs your ability to drive a car or operate machinery, and may cause health problems.


Send a SASE for a bunch of wallet-sized copies of this recipe. ☞^{101*} Collect the whole series. Send me your flavor ideas. Email: hazel-chaz@netcom.com. ☞^{101*} See you in '96!
C.M.J. Baden, P.O. Box 1792, Redondo Beach CA 90278.



Top 20 science fictional places you can see in LA today

1. The Ackermansion (2495 Glendower Ave., Hollywood): The home and collection of Forrest J Ackerman is unquestionably the most science fictional landmark in the city. Forry still hosts tours. Call (213) 666-6326. Quite appropriately, up the street from Forry is the mansion seen in Vincent Price's *The House On Haunted Hill*.
 2. The Los Angeles River: No need to worry about the giant mutant ants in the underground flood control channels since they put giant steel lids over the mouths of the conduits that empty into the river. Yes, this is also where a derelict (in *Chinatown*) set up housekeeping in the dry riverbed, chest of drawers and all, only to be accidentally drowned by water illegally released from the city reservoir.
 3. Paramount Studios (5555 Melrose Ave., Hollywood): One day in the 1930s, says Ray Bradbury, "I strapped on my roller skates and went off...the biggest lunk of a boy you'd ever want to see." He skated up to the iron-grille gate of Paramount Studios in time to see three of his idols, including W.C. Fields. "I whipped out my autograph book, to let the musician, then the producer sign it. Then I handed it to Mr. Fields who signed it with a flourish. And as he handed it back," finished Bradbury, in his finest imitation of Fields, "he said, 'Here you go, you little son of a bitch!'" Paramount is also somewhat known for its connection to *Star Trek*....
 4. Los Angeles County Arboretum (301 N. Baldwin Ave., Arcadia): Never mind the films that have used this place as a backdrop. The lush plantlife on display gives its own lessons in set decoration. The Arboretum grows and displays almost half the varieties of eucalyptus in existence. But eucalyptus is native to Australia, meaning there was no eucalyptus growing in Southern California before the 19th century. The padres who built the San Fernando Mission in the 1790s never saw a eucalyptus tree, yet, today eucalyptus dominates the view from the Mission in every direction. The palm may be Southern California's icon, but the fast-growing, water-stingy eucalyptus does the real work of creating the illusion that Los Angeles is not an island in the desert.
- So far as actual film history is concerned, a Queen Anne cottage on the Arboretum grounds is where Tattoo kept vigil for "De plane, de plane!" in *Fantasy Island*. The Arboretum also appeared in eight Tarzan movies. Fan historians will be far more interested to learn that Don Fitch worked here for many years.
5. The Disney Studios (500 S. Buena Vista St., Burbank): Part of the studio's Michael Eisner-managed prosperity has gone to transform its assorted dull beige buildings into an eye-popping collection of offices in disparate architectural styles ranging from Romanesque Revival to Toontown Bauhaus. Peek through the front gate — yes, the columns supporting the facade of the new office building are the Seven Dwarfs. That's quite funny enough, but, like me, you may have received your original education about caryatids, temple columns sculpted like priestesses, from *Stranger In A Strange Land*. Remembering Jubal Harshaw's lecture about Rodin's sculpture, "Caryatid Who Has Fallen Under Her Stone", makes the idea of the dwarfs playing that role richly satirical as well as comic.
 6. Dangerous Visions Bookstore (13563 Ventura Blvd., Sherman Oaks): It's headquarters for many science fiction readers and writers in the San Fernando Valley. Lydia Marano's store carries all the genre books and magazines and holds autograph parties. It's a must-visit for sf writers on book promotion tours.
 7. Chaos Manor: Jerry Pournelle's home, as envisioned by *Byte* magazine readers, is overwhelmed by review copy computer merchandise and populated by a demimonde of opinionated computer users (if that isn't redundant).
 8. The Los Angeles Science Fantasy Society Clubhouse (11513 Burbank Blvd., North Hollywood): LASFS outgrew the original Ventura Blvd. clubhouse and moved here in 1977. The club meets every Thursday night at 8 p.m. Guests are invited to attend three free meetings before deciding whether to apply for membership.
 9. The Griffith Park Observatory (2800 E. Observatory Road, Los Angeles): Griffith Park is the largest city park in America, and set like a jewel on the hillside above Los Feliz Blvd. is the Observatory. Here's where Arnold Schwarzenegger materialized in the opening scenes of *The Terminator*. *The Rocketeer* blasted off from here. *The Man From U.N.C.L.E.* spied here. City lights long ago put an end to its service as a major research observatory, but it has continued a teaching mission through its planetarium shows, exhibits, and astronomy publications. It is one of the most popular tourist meccas in the city.
 10. The Hollywood Bowl (Highland Avenue near Rte. 101): Where Bugs Bunny directed the Los Angeles Philharmonic.

Progress Report One

- 
11. California Institute of Technology (1201 E. California Blvd., Pasadena): CalTech is one of the most famous research universities in the world. It's the first place news reporters converge after a major earthquake, a legacy of the late Dr. Charles Richter, who devised the quake intensity scale bearing his name. While best known for its Nobel prizewinners, CalTech's contributions to science fiction fandom include a leading filksinger, Barry Gold, an awesome punster, Ed Buchman, the hard-science writer's best friend, the late Dan Alderson, and Flieg Hollander, perhaps the first physicist to discover the Ringworld is unstable.
 12. Los Angeles City Hall (200 N. Spring Street): It was the *Daily Planet* of the George Reeves *Superman* era, and was destroyed by Martians despite Gene Barry's best efforts in *War of the Worlds* — the same movie where Barry tells someone, "Welcome to California!"
 13. University of Southern California, School of Cinema and Television (850 W. 34th Street, Los Angeles): Here's where George Lucas produced a brilliant student film he later remade as the theatrical feature *THX 1138*. Lots of other talented filmmakers studied here. As a USC freshman in 1970, I met a St. Louis comics fan named Bob Gale who got me interested in attending my first LASFS event, a banquet where Harlan Ellison read from his new story, "Beast That Shouted Love at the Heart of the World". Bob studied at the School of Cinema and went on to have a great career, with writing credits for *I Wanna Hold Your Hand* and *Back To The Future*, while I went on to drop his name a lot....
 14. The Gamble House (4 Westmoreland Place, Pasadena): Speaking of *Back to the Future*, this was the home of "Doc", Christopher Lloyd's character. The Gamble House is actually much more famous in its own right. Gamble, of Proctor and Gamble, had the place built when he retired to Pasadena around the turn-of-the-century. It's a renowned example of the Arts and Crafts architectural movement, and has been designated a California Historic Landmark.
 15. Santa Monica Freeway at Overland Drive, Westbound On-Ramp: It's where Larry Niven starts "The Deadlier Weapon", his short story about the duel of wills between a driver and a murderous hitchhiker. The on-ramp is close to Palms Playground, LASFS' meeting place when I joined in 1970.
 16. Robert Heinlein's "Crooked House" in Laurel Canyon: At least, Heinlein lived in Laurel Canyon sometime in the 1940s, and fans speculate that he used his own home as the premise for the story "And He Built A Crooked House".
 17. Bronson Caverns (at the end of Canyon Drive, Hollywood): Here was the Klingon prison camp in *Star Trek VI*, the Bat Cave in both the tv series and the movies, and the jungle island in the Fay Wray *King Kong*. The Caverns are part of Griffith Park, and have become a traditional place for LASFS club picnics. One of LASFS' fan film projects, *Triple Doubles*, shot footage here.
 18. The Town Square of Sierra Madre: In the foothills beyond Pasadena is the cozy community of Sierra Madre, where Kevin McCarthy and Dana Wynter hid from the pod people in *Invasion of the Body Snatchers*. Marty Cantor lived here before he became active in LASFS, but we assume there is no connection.
 19. Vasquez Rocks County Park (10700 Escondido Canyon Rd., Agua Dulce): These angular rocks jutting from the desert floor have supplied a stage for everything from *Star Trek* and *Star Wars* to *The Flintstones*.
 20. Elliott's House from *E.T.* (7121 Lonzo St., Tujunga): Don't look for the redwood forest in the backyard, otherwise, this was *E.T.*'s home while he visited Earth. (The neighborhoods filmed in other outdoor scenes, like the Halloween sequence, are scattered around the northwest San Fernando Valley.)

The USC campus has been seen in many feature films. Those most notable for sf fans include *Cocoon* and *The Hunchback of Notre Dame* (not a football satire.)

14. The Gamble House (4 Westmoreland Place, Pasadena): Speaking of *Back to the Future*, this was the home of "Doc", Christopher Lloyd's character. The Gamble House is actually much more famous in its own right. Gamble, of Proctor and Gamble, had the place built when he retired to Pasadena around the turn-of-the-century. It's a renowned example of the Arts and Crafts architectural movement, and has been designated a California Historic Landmark.
15. Santa Monica Freeway at Overland Drive, Westbound On-Ramp: It's where Larry Niven starts "The Deadlier Weapon", his short story about the duel of wills between a driver and a murderous hitchhiker. The on-ramp is close to Palms Playground, LASFS' meeting place when I joined in 1970.

Top 10 science fictional places in LA that don't exist anymore

1. Dan Alderson's home in Tujunga: The late Alderson's home was so overflowing packed with his collection that he even stored comic books in his oven — which, strangely enough, was not the reason the place burned.
2. The Hill: Fan residence that played host to LASFS for part of the 1960s, and thereby became immortalized as the setting of Harlan Ellison's short story, "Shattered Like a Glass Goblin." He described it as, "Gothic, hideous, with grass half-cut and the rusted lawnmower sitting in the middle of an unfinished swath — as if the half-cut grass were a placating gesture to the outraged tenants of the two lanai apartment houses that loomed over the squat structure on either side."

INTERSECTION

AUGUST 24-28TH 1995 GLASGOW, SCOTLAND

GUESTS OF HONOUR

SAMUEL R DELANY & GERRY ANDERSON

FAN GUEST OF HONOUR

VINÇ CLARKE

TOAST MR & MRS

PETER MORWOOD & DIANE DUANE



THE SCOTTISH WORLDCON is your chance to celebrate SF in a very special atmosphere - with fans from across the globe on the banks of the Clyde.

GUESTS OF HONOUR are writer and critic **Samuel R Delany** (author of *Nevèryöna*, *The Einstein Intersection* and *Dhalgren*) and **Gerry Anderson**, creator of *Thunderbirds* and *Captain Scarlet*. Toast Mr & Mrs are authors **Diane Duane** and **Peter Morwood**. Fan GoH is **Vinç Clarke**.

THE PROGRAMME will debate *intersections in space and time*: crucial points of convergence or divergence in SF, history and cultures at a Gathering of the Fannish Clans.

US Address: Intersection, PO Box 15430, Washington DC, 20003, USA

UK Address: Intersection, ADMAIL 336, Glasgow, G2 1BR, United Kingdom

E-mail: intersection@smof.demon.co.uk

Rates for Attending memberships \$95 (£60) until 30 Sept 94 then \$125 (£80) Rates for Supporting memberships \$25 (£15)

Worldcon and World Science Fiction Convention are registered service marks of the World Science Fiction Society.

Progress Report One

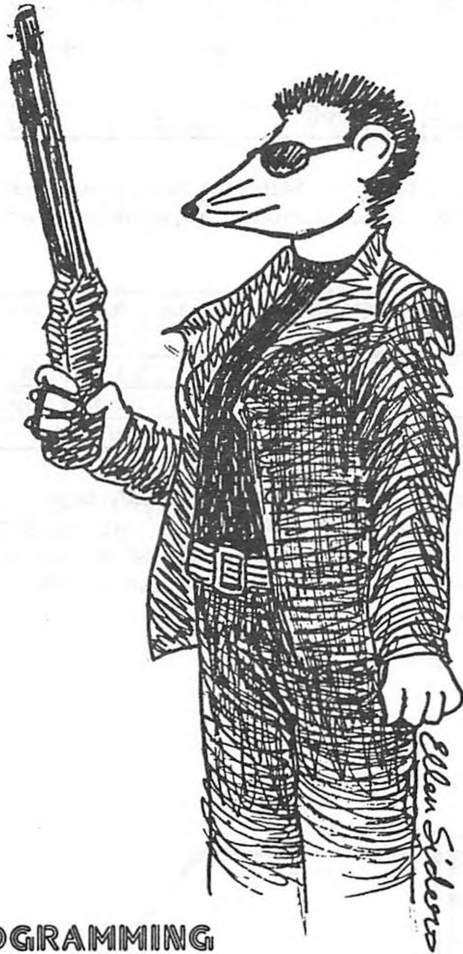
3. Bradbury's Newspaper Pitch at 10th and Normandie: *THE DAMN THING*, a 1930's fanzine, reported, "Rayoul Douglass Bradbury [is] a most unique individual.... Rayoul attends all the latest affairs of Hollywood. Rayoul is also acquainted with a number of Hollywoodians. His favorite hangout is the Brown Derby on Vine Street, though he gets all his meals at Hugo's Hot Dog Stand across the street. Here, in front of the Brown Derby, he points out (but never speaks to) all the celebrities to anyone who might be with him. And yet, Rayoul makes his living as a news hawker on 10th and Normandie! What we can't figure is how he makes his \$10 stretch like it does."
4. The Fan Square Mile: Once upon a time in the 1960s, so many LASFSians lived in this mid-Wilshire neighborhood they made its nickname famous. The Hill was part of this community. Charlie Jackson II says that the 1970s disaster movie *Earthquake* showed many public buildings from the vicinity of the Fan Square Mile collapsing into rubble.
5. Clifton's Cafeteria: LASFSians of the 1930s congregated at this famous downtown eatery. T. Bruce Yerke, in *Memoirs of a Superfluous Fan*, remembered, "The Los Angeles Chapter, #4, of the Science Fiction League, led a most sedate sort of social life in 1937. The primary contact between members were the first and third Thursday meetings at Clifton's.... On those occasions, when there was no scheduled speaker, the topic of current and past stories was a valid and always interesting basis of discussion.... When the meeting adjourned, cliques of us would drift down the cafe part of Clifton's, again ordering giant malts, or sponging off Mr. Clifton's sherbet mine. A lot of members at the time were just out of high school, or else simply and flatly unemployed. Perhaps that is why we took such flagrant advantage of Mr. Clifton and his generous cafe. There was no rent and all manner of free nourishment in his endless limeade waterfall and automatic sherbet mine, both nationally advertised."
6. Pico and Sepulveda: As in the song beloved by Dr. Demento fans. Like most of the other passion pits named in the song performed by Felix Figueroa and the Figs, this was a drive-in movie.
7. Marineland: This aquatic park on the Palos Verdes Peninsula pioneered the kind of dolphin stunt shows now seen at Sea World. It also turned a few dollars as a shooting location for *Creature From the Black Lagoon*.
8. Jay Ward Productions: The 15-foot-tall "Rocky and Bullwinkle" statue still marks Jay Ward's offices on Sunset Blvd. The advertising company that now owns the building apparently has also left undisturbed a small courtyard where June Foray, the voice of Rocky and Natasha, signed her name in the concrete.
9. The Spruce Goose Hangar: Howard Hughes' giant seaplane was sawed apart and shipped for display in Oregon just a few years ago. Its Hangar was nearby the Queen Mary in Long Beach. The Spruce Goose figured prominently in the Larry Niven and Steve Barnes novel *Dream Park*. The Queen Mary remains Long Beach's main landmark, but has little of science fictional note in its background, apart from serving as a shooting location for the disaster film *The Poseidon Adventure*, and being a place where we once caged a free lunch for considering it as a Westercon site.
10. The First LASFS Clubhouse: A single family dwelling that had been rezoned for commercial use, LASFS purchased 11619 Ventura Blvd. in 1973 and promptly outgrew it, moving to its current location in 1977. The next tenant, a tobacconist, completely remodeled the front in brick. If you bought LASFS Land from Elst Weinstein (in the convenient cubic-inch plastic container), it came from here.

FANDOM IN THE '50's... WHAT WAS IT LIKE?

Read Harry Warner Jr.'s
Hugo-winning
A Wealth of Fable

Available for \$25 from
SCIFI Press
P.O. Box 8442
Van Nuys, CA 91409

RATMINATOR



PROGRAMMING

With two years to go before L.A.con III, it's a little early for us to have decided on any specific program items but not too early for us to begin planning who and what and how many.

To start with, we believe less is more. Recent Worldcons have had as many as 17 program items going on at the same time. We think that's too many. Topics get divided into parcels too small for really meaningful discussion and you end up with too many programs of similar appeal being scheduled opposite each other. It isn't useful to anyone to have "Getting Started as a Writer" at the same time as "What are Editors Looking For?" or "The Future of the Space Program" opposite a presentation on the upcoming flights of the DC-X. We still intend to have a lot going on but, perhaps, not quite as many items at once.

Our philosophy is that the World Science Fiction Convention is for science fiction fans from around the

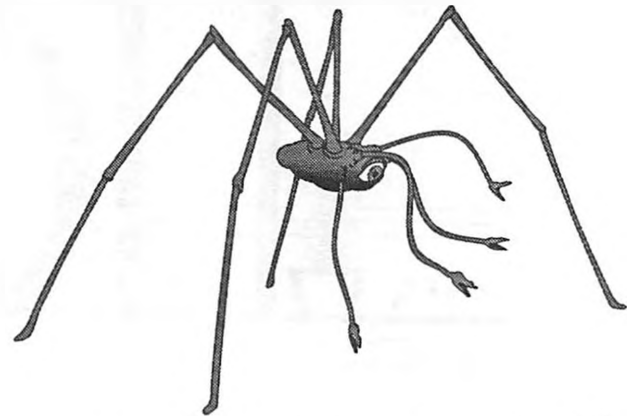
world and all the worlds of science fiction. We intend to have program items in as many areas as possible, including the literary aspects of science fiction, fantasy, and horror; how to break in and survive as a writer; science and space; movies and television; comics; and, of course, fandom.

We're always on the look out for good ideas. We have a team of people who will be working together to come up with a schedule of programs we think is interesting and different from the programs you see at every convention. Our program will include panels, speakers, and readings, of course, but we also want to try other types and "shapes" of program items. George R.R. Martin recently suggested that we try semi-formal debates; two people who have strong but opposing opinions on a specific subject discussing and debating their feelings. We think that's a good idea and intend to give it a try. But we need more suggestions. If you have any ideas for types of programs or for specific program items, please write to us at the convention address.

Don't be afraid to make suggestions. If there's something you haven't seen at a Worldcon and don't know why it hasn't been on the program before, it may be because we haven't thought of it or don't know how to make it work. Give us the benefit of your knowledge and ideas. We don't promise to use them all but we'd like to hear them.

Writers' Workshops

L.A.con III will be running a series of Writers Workshops for fledgling and hopeful writers. Details and instructions will be included in future Progress Reports with submissions accepted after September 1995. The Workshops will be coordinated by Adrienne Foster who has run similar programs for both the 1993 Worldcon in San Francisco and the 1994 Worldcon in Winnipeg. Established, professional writers in the field will conduct the workshops. While the previous Writers Workshops have been limited to prose writing, we will be investigating the possibility of adding sessions for other areas including scripts and comics.



Progress Report One



FINANCIAL REPORT

As of July 8, 1994

INCOME:

Ads	\$50.00
Interest	\$533.97
Memberships	\$80,319.50
 TOTAL:	 \$80,903.47

OUTGO:

Administration	
Bank fees	\$14.50
Postmaster	\$29.00
Kitchen Sink	
WSFS - Mark Reg Committee	\$1,302.00
Services to Members	
Publications	\$1,199.01
Publicity	\$69.73
Vice-Chair	
On-line set-up	\$243.20
 TOTAL:	 \$2,857.44

BALANCE: \$78,046.03

Elayne F. Pelz

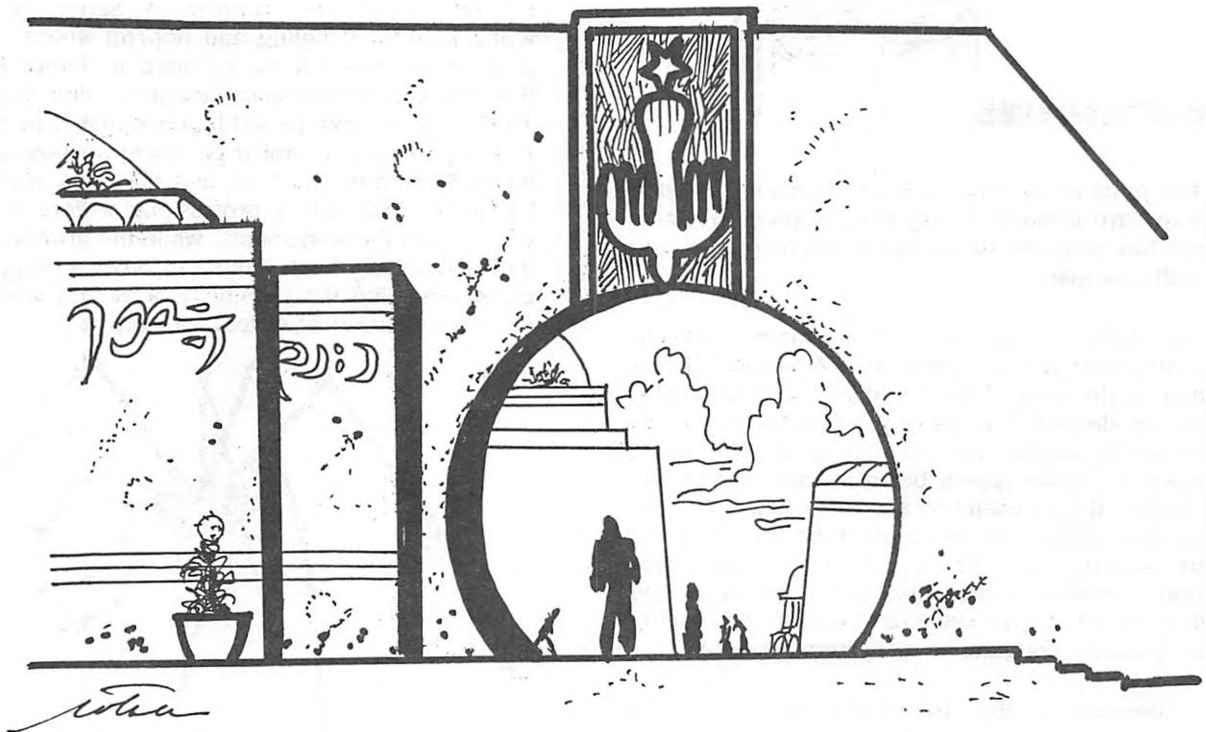
AD RATES / PUBLISHING DATES

Ad Rates	Full Page	Half Page	¼ Page
Image Size	7 ½" x 10"	7 ½" x 5"	3 ¼" x 5"
Fan	\$70	\$40	\$25
Semi-Pro/EduOrg*	\$150	\$90	\$50
Professional	\$200	\$125	\$80

* Semi-Pro/EduOrg: Semi-pro magazines (based on Hugo criteria), educational organizations, university publishers, etc.

Progress Report	Publication Date	Ad Copy Due
#2	1 February 1995	1 January 1995
#3	1 August 1995	1 July 1995
Future	To be announced	

All rates shown are for camera-ready copy. Special positioning and other services are available at additional charge. Please request in writing, well ahead of the deadline, from the L.A.con III P.O. Box address.



The 52nd World Science Fiction Convention

ConAdian

September 1 - September 5, 1994 in Winnipeg, Manitoba

With Guests:

Author

Anne McCaffrey

Artist

George Barr

Toastmaster

Barry B. Longyear

Fan

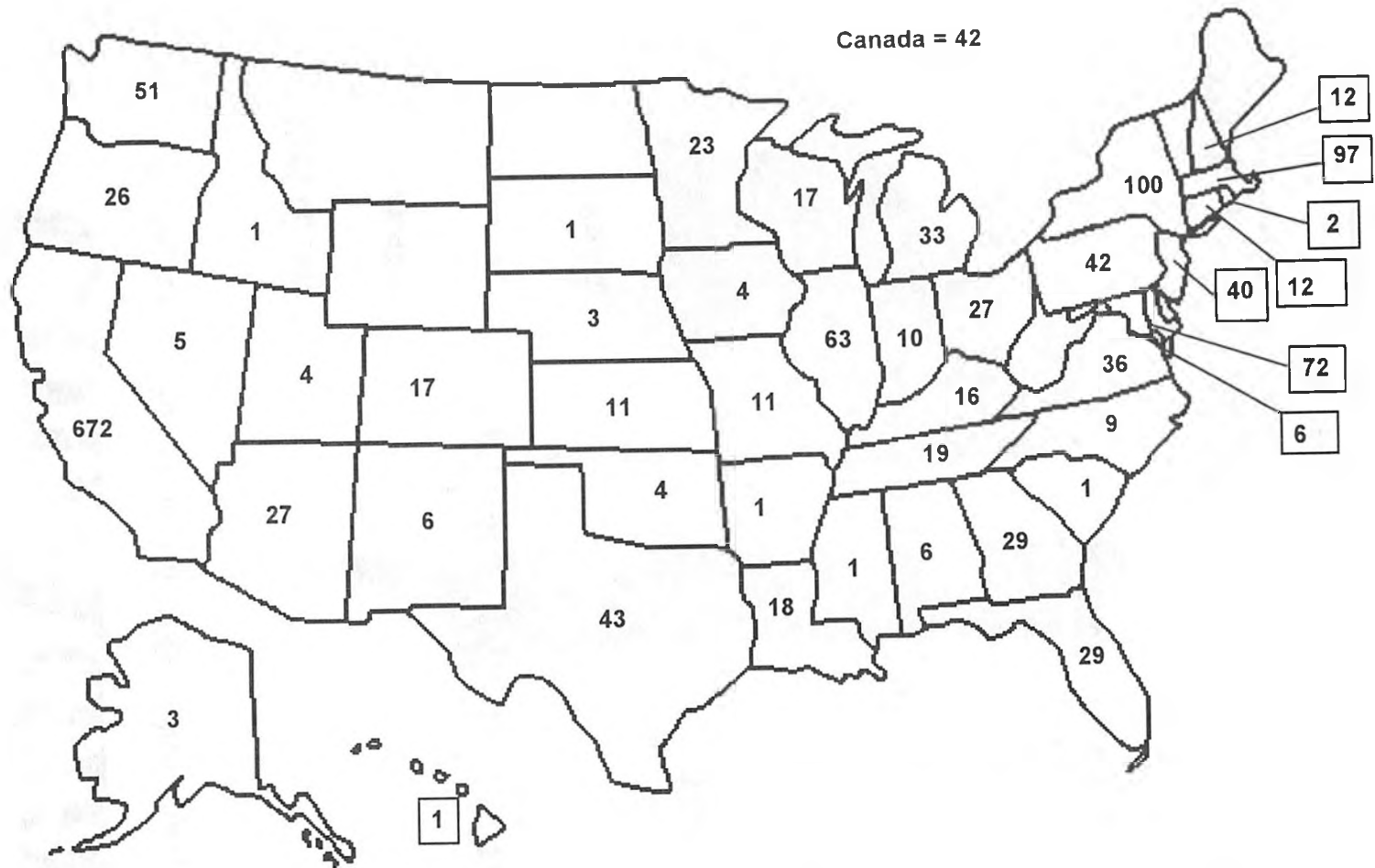
Robert Runte

CONADIAN - Post Office Box 2430, Winnipeg MB, R3C 4A7 Canada

Membership Rate — At the Door

Attending Membership (\$US/\$CDN)

\$150/\$200



L.A.con III
Members
as of 7 July 1994

Andorra = 1
 Australia = 11
 England = 14
 France = 1
 Germany = 4
 Ireland = 3

Japan = 23
 Mexico = 1
 Netherlands = 5
 Northern Ireland = 2
 Norway = 1
 Oman = 1

Saudi Arabia = 2
 Scotland = 2
 Spain = 1
 Sweden = 3

MEMBERSHIP LIST

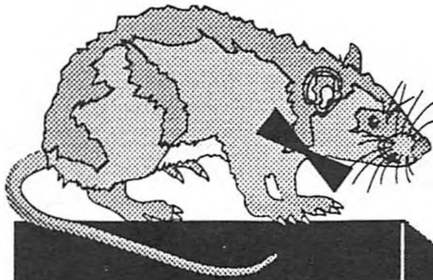
Members as of 10 July 1994

11 A	Abartis, Cezarija	82 A	Barnett, Lisa A	156 K	Brin, Sarah	228 S	Clowney, Vincent
12 S	Abbe, John C	83 A	Barnhard, Gary	157 A	Broomhead, Ann A	22 A	Cobb, Nancy
13 S	Abramowitz, Alyson L	84 A	Barnhard, Judy	158 S	Bross, Rebecca	230 A	Cobb, Stewart
14 A	Ackerman, Eve	85 K	Barnhard, Katherine	159 S	Brown, Bill	231 A	Cohen, Earl T.
15 A	Ackroyd, Justin	86 A	Barrett, Bryan	160 A	Brown, Charles N.	232 S	Cohen, Eli
16 A	Adachi, Shin'ichi	87 A	Barrett, Sean Douglas	161 A	Brown, Denis Paul	233 A	Cohen, Sandy
1489 A	Adams, Bruce C.	88 S	Barron, John	162 A	Brown, Diana	234 A	Cohen, Sharon
17 S	Adams, Frank	89 A	Bartlett, Richard	163 A	Brown, Guest of Charles N.	1724 A	Cohen, Sheri
18 A	Adams III, Roe R	90 A	Bartlett-Sloan, Kirby A	164 S	Brown, Jordan	235 S	Cohen Koehler, Lynn E
19 A	Adkins, Sue Ellen	91 A	Bartlett-Sloan, Marie L	165 S	Brown, Phyllis S	236 A	Cole, Anita L
20 A	Adler, Adina	92 A	Barton, Adrain	166 A	Browne, Mike	1658 A	Cole, Corey S.
21 A	Agin, Gary P	93 A	Bariz, David	167 A	Brunet, James	237 S	Cole, Jennifer
22 S	Allen, Kevin B	94 S	Bateman, Gary	1684 A	Bryant, Anthony J	238 S	Cole, Larry M
23 S	Allen, Robert	95 S	Bateman, Gary, Guest of	168 A	Buhl, Christian	1659 A	Cole, Lori Ann
24 S	Allis, Todd	96 S	Baty, Kurt	169 A	Burdick, Bruce S	1660 K	Cole, Michael
25 A	Allsman, Ancilla	97 A	Baum, Allen	170 S	Burstein, Michael A	239 S	Cole, Susan
27 S	Alschuler, Matthew B	98 A	Beach, Covert	171 A	Bushyager, Linda	240 S	Coleman, Adam
26 S	Alschuler, Matthew B., Guest of	99 A	Bear, Beaman Theodore	172 A	Bushyager, Ron	241 A	Coleman, Art
1687 A	Alvarez, Janet M.	100 S	Beare, Stephen G	173 S	Bussey, Michele	1250 A	Coleman, Michele
28 A	Alves, Carol Ann	101 S	Beasley, Sally	174 A	Butler, Charles	242 S	Collins, C Douglas
29 A	Alves, Jim	102 A	Beatman, Howard G	175 S	Butler, Linda	243 S	Collins, Robin A
30 A	Alvord, Clinton	103 A	Becker, Tom	176 S	Butler, Ron	244 A	Collinson, Jack
1593 A	Amos, Kenneth	104 A	Beeman, William R	177 A	Butterfield, David	245 S	Collis, G Rene
31 A	Anda, Andrew Allen	105 A	Beers, Jinx	1679 K	Butterfield, Duncan	246 A	Connell, Byron
32 A	Anderson, Claire	106 S	Bell, M Shayne	178 A	Butterfield, Patt	247 A	Connell, Tina
33 A	Anderson, Dave	107 A	Bemis, Judith C	179 A	Bynum, Frank	248 S	Cook, Don
34 A	Anderson, Gary	108 A	Bender, Jan	1731 A	Byrd, Brent A.	1652 A	Cook, Glen
35 A	Anderson, Helen	109 A	Benoun, Sherri	180 A	Cady, Chet	1653 A	Cook, Guest #1 of Glen
36 S	Anderson, Howard	110 A	Benoun, Tony	181 A	Cady, Chuck	1654 A	Cook, Guest #2 of Glen
37 A	Anderson, Janet Wilson	111 S	Bently, Alice	182 A	Cady, Katrine A.	249 A	Cook, Norman L
38 S	Andrews, Caroline	112 A	Bernson, Mike	183 A	Cady, Sam	250 S	Cookson, Robin E
39 A	Andrews, John C	113 A	Bernson, Myra	184 A	Cady, Tasha	1699 A	Cool, William C
1562 A	Andruschak, Harry Cameron	1690 A	Berry, David	185 A	Caidin, Eric	251 S	Cooper, Cathleen A
40 S	Appleman, Daniel	1691 A	Berry, Terry	186 A	Caiderwood, John	252 A	Cooper, Chris
41 S	Aramian, Ara	1668 A	Berta, Bea	187 S	Camp, Richard E	253 A	Cordsmeyer, Paul
42 A	Aramian, Tammy	114 A	Berven, Leroy F	188 A	Canfield, Jeff	7 AG	Corman, Roger
43 A	Armbruster, Bobbi	115 A	Berven, Susan J	189 A	Cantor, Robbie	8 AG	Corman, Roger, Guest of
1585 A	Arnush, Craig	116 A	Best, Monika	190 A	Cantrell, Stephanie	256 A	Cornetto, John
44 A	Arthur, Roberta R	117 A	Beyke, Maurice A	191 S	Caplan, Jack	257 A	Corson, Don
45 A	Ashton, Lisa	118 A	Bickford, Greta C	192 S	Caradeuc, Diane	1604 A	Costikyan, Greg
46 A	Ashton, Robert	119 S	Bieniewicz-Valada, Michael	193 S	Carleton, Gordon	258 S	Cowan, Maia
47 S	Aspler, Joseph	120 S	Bigglestone, Clint	194 S	Carlson, Vivian	259 S	Crawford, Lindsay
48 A	Atherton, Nancy T	1646 A	Bitan, Greg	1004 A	Carroll, Cathy	261 A	Creasey, John J
49 A	Atkinson, Thomas G.	121 A	Billings, Lee S	1712 A	Carroll, Friend #1 of Cathy	262 A	Creasey, Mary
50 A	Attwood, Collin	122 A	Birkhead, Sheryl L	1713 A	Carroll, Friend #2 of Cathy	1709 A	Cronquist, Cathy
51 A	Atwood, Bonnie	123 A	Bisenieks, Dainis	195 A	Carroll, Sharon	1710 A	Cronquist, Linda
52 S	Atwood, Deb	124 S	Bishop, James Daniel	196 S	Carruthers, Johnny	263 S	Cryan, John G.
53 A	Atwood, Ted	125 S	Blackman, Mark L	197 S	Carson, Dana	1637 A	Clein,
54 S	Auerbach, Roy	126 A	Blattel, Mark	198 S	Carson, Melinda	264 S	Cummings, Julie
55 S	Aul, Billie	127 A	Bligh, Richard A	199 A	Case, Jerry	265 A	Curry, Kathy
56 A	Austin, Alicia	128 A	Bligh, Victoria L	200 A	Cassano, Renita	266 A	Curtis, S L
1594 A	Austin, Edwin	129 S	Blog, Gary S	201 A	Caswell, Dennis	267 A	D'Alessio, Angelo
57 A	Austin, Elizabeth	130 A	Blohm, John	254 S	Cavin, Bill	268 S	Dachowitz, Emily
58 A	Austin, Kevin G	131 S	Bloom, David M	255 S	Cavin, Cokie	269 A	Dakins, Mark
59 A	Avary, Beth	1633 A	Bloom, Elaine	202 S	Cavitt, Ann	270 S	Daly, Kay
1606 A	Avery, Shirley	132 A	Bloom, Kent	203 A	Cecil, Ann	271 S	Dancey, Ryan S.
1706 A	Avila, Ruben	1571 A	Bloom, Michael	204 A	Cedeno, Nancy	272 A	Daniel, James S
60 A	Axler, David M	133 A	Blute, Mary-Rita	205 S	Chalker, David	273 A	Daniel, Linda
61 A	Backman, Charles	134 A	Bobo, Scott	206 A	Chalker, Jack L	1592 A	Daniels, Dik
62 A	Backman, Charles, Guest 1 of	135 S	Bodden, Bill	207 A	Chambers, Glen	274 S	Dann, Michael B
63 A	Backman, Charles, Guest 2 of	1580 A	Boettcher, Duke	208 A	Chambers, Ron	275 A	Dashoff, Joni Brill
64 A	Baden, C S F	136 A	Boettcher, Glen	209 S	Chandler, Carol	276 A	Dashoff, Todd
65 A	Baernstein, Janet	137 A	Bolgeo, Timmy	210 S	Chapek-Carleton, Lori	277 A	Daugherty, James Stanley
1619 A	Bahlmann, Diane	138 S	Bollerud, R Merrill	211 S	Chapman, John P	278 A	Daugherty, Kathryn
1620 A	Bahlmann, Mark	1663 A	Bonham, Michael	212 S	Chapman, Judith Ann	279 A	Davenport, Anne
66 A	Bailey, Mark W	139 S	Boster, Alex	213 S	Charney, Kat	280 S	Davidson, Howard
67 A	Bailey-Mathews, Alexander I	140 A	Botwin, Mitch	214 A	Chen, Elsa	281 A	Davis, Diane M
68 S	Balazs, Frank	141 S	Boucher, Stephen	215 S	Cherry, Dennis	282 A	Davis, Joe
69 A	Baldwin, John	142 S	Boudville, Gigi	216 S	Cherry, Kristine	283 A	Davis, Kim
70 A	Baldwin, Sharon	1665 A	Boylan, Charles	217 A	Cherry, Stephen L.	284 A	Davis, Phoebe A
71 A	Balen, Henry	143 A	Bradley, Charles K	1617 A	Child, William L.	285 S	Davis, Rob
72 A	Balter, Gerri	144 A	Brandshatt, Richard	218 A	Chisholm V, Walter S	286 A	Day, Joy
73 A	Bandit,	145 A	Bratman, David	219 S	Chun, Ivy	287 A	Day, Lea M
74 S	Bangs, Mari	146 A	Breibbart, Seth	220 A	Clark, Bev	288 S	Dazzo, Genny
75 S	Banin, Saar	147 A	Breslau, Esther	221 A	Clark, David W	289 A	De Guardiola, Susan
76 A	Bantz, Bruce W.	148 A	Breslau, Michael	222 A	Claypool, Gavin	290 S	De La Casa, Richard
77 A	Bantz, Jonni	149 A	Breiney, Richard D	223 S	Clayson, Mathew	291 A	De Priest, Carol
78 A	Barber, Elizabeth	150 S	Brick, Barrett L	224 S	Cleaver, Fred	292 A	De Priest, Warren
1703 A	Bard, Barry	151 A	Brickner, George S	225 A	Clement, Dave	293 A	De Wolfe, Simon Mark
79 S	Bard, Stephen T	152 A	Brigham, Cheryl	226 A	Clifford, Robert J	301 S	DeLaurentis, Linda
80 A	Barksdale, Heather	153 A	Brin, David	227 A	Clifford, Ruie Lue	303 A	DeMarco, Tom
81 A	Barlow, John H	154 A	Brin, David, Guest 1 of	1675 A	Clink, Carolyn	294 S	Deckert, Alana
		155 A	Brin, David, Guest 2 of	1732 S	Clink, David	295 A	Deckert, Dan

Progress Report One

296 A	Deckert, Danise	1535 A	Evernam, Annette	464 S	George, Marjorie	545 A	Hartling, John
297 S	Deckert, Ian	381 A	Ewell, David	465 A	Gerds, Eric	546 S	Hartlove, Aimee
298 A	Deckinger, Mike	382 S	Exline, Darret L	466 S	Garstein, Linda	547 A	Harvia, Teddy
299 A	Deckinger, Sandi	383 A	Faries, Jennie	467 A	Gibbons, John K	548 A	Haselline, Sue
300 S	Delaplace, Barbara	384 S	Farinelli, Cindy	468 S	Gibbons, Paul	549 A	Hastie, David J
302 A	Delisio, Mary E	385 S	Farinelli, Mike	1723 A	Giberson, Brian	550 S	Hatcher, Matthew
304 A	Denebeim, Jay	386 S	Farmer, Dale A	469 A	Giese, Tom	551 A	Hathaway, Ross
305 A	Deneroff, Linda N	387 A	Farr, Bruce	470 S	Gilbert, Zelda	552 A	Hay, Alys
306 A	Dennett, Gay Ellen	388 A	Farr, Lea	471 S	Gilliam, Richard	553 A	Hayashida, Shigeru
307 A	Dennis, Jane	389 S	Farwell, Janel Lynch	472 A	Ginter, Erica V. D.	554 S	Hayes, Lisa
308 A	Dennis, Scott C	390 S	Farwell, Troy	473 A	Ginter, Karl	1673 A	Hayes, Nancy
309 A	Denny, Charles R	391 S	Fassett, David	474 A	Glassner, Craig	555 S	Hayes, Reilly
310 A	Deihlfesen, Rae	392 A	Faunt, Doug	475 A	Glassner, Marsha	1595 A	Hazen, M.L.
1607 A	Deutsch, Martin E.	1581 S	Fawcett, Bill	476 S	Glaub, Robert	556 S	Hedges, Walter W
311 A	Dever, Don	393 S	Feder, Moshe	477 A	Glazer, Glenn	557 A	Hejna, Kristine
312 S	Devney, Michael	394 A	Feldbaum, Gary Keith	478 S	Glicksohn, Mike	558 A	Helgesen, Martin W
313 A	Dickey, Arthur R. T.	395 S	Feldhusen, Allison H	479 A	Glyer, Mike	559 A	Hellinger, Stuart C
314 A	Dietz, Ann F	396 S	Feldhusen, Michael J	480 A	Gold, Barry	560 A	Hemstath, Greg A. L.
315 S	Dietz, Karl	397 S	Feldman, Gary	481 A	Gold, Lee	561 A	Henderson, Arthur L
316 A	Dietz, Loren	1722 A	Fenster, Robbyn H.	482 A	Gold, Lynn	562 A	Henderson, Rebecca R
317 S	Dietz Jr, Franklin	398 A	Feraud, Michelle	483 S	Gold, Steven T	563 A	Hendrick, Lyndia
318 S	Digby, Tom	399 A	Ferer, Susan	1643 A	Goldberg, Guest of Seth	564 A	Hendrick, Woody
319 A	Diggs, Patricia A	400 A	Fetheroff, Steven	484 A	Goldberg, Seth	565 A	Heneghan, Jack
320 A	Docherty, Vince	401 A	Filipowicz, Katie	485 S	Goldenberg, Simon S	566 S	Henry, Tracy L
321 A	Doering, David	402 S	Finch, Sheila	486 S	Gomoll, Jeanne	567 A	Hepperle, Robert
322 S	Doig-Colls, Robin	403 A	Finder, Jan Howard	1711 A	Gonzales, Desiree	568 A	Herrup, Mark
1623 A	Doms, Carol A.	404 S	Finkelstein, Ed	487 A	Gonzalez, Henry I	569 S	Herscher, Philip
1624 A	Doms, Dennis J.	405 S	Fischer, Lori Rose	488 A	Goodin, Joy	570 A	Hertel, Elisa
323 S	Donaldson, Robert A	406 A	Fish, Leslie	489 S	Goodman, Sarah E	571 A	Hertel, Mark
324 A	Donato, Lou	407 S	Fisher, Glen	490 S	Gottlieb, Shayin	572 S	Hertz, John
325 A	Donato, Myrna	408 A	Fisher, Melanie A	491 S	Grady, Daphne G	573 A	Herz, Melanie
326 S	Dorethy, Paul R	409 A	Fisher, Naomi C	492 A	Graham Jr, Edward A	574 A	Hewitt, Marylouise
327 A	Dormer, Paul	410 A	Fitch, Don	493 A	Grant, Publisher Inc, Guest of Donald	575 S	Higashi, Michael
328 S	Dorney, Andrea	411 A	Flanagan, Sally	494 A	Grasso, Elyse M	576 S	Higgins, William S
329 A	Doroschenko, Leo	412 S	Fleischmann II, Joseph	495 S	Gray, Louis Elver W	1649 A	Hikida, Susan K.
330 S	Dorsky, Lenny	413 A	Flientka, George	496 A	Graybill, Terry Steiner Sisk	1626 A	Hildreth, Dianna
1651 A	Dougherty, Guest of Neal	414 A	Flynn, George	497 S	Grayson, Ashley D	577 S	Hill, Betsy
1650 A	Dougherty, Neil	415 A	Flynn, John L	498 S	Grayson, Carolyn	578 A	Hill, Christina
331 S	Douglass, Cheri	416 A	Foglio, Kaja	1688 A	Green, Bill	579 A	Hill, Linda Lee
332 S	Douglass, John	417 A	Foglio, Phil	Green, Ed	580 A	Hill, Scott F	
1669 S	Downs, Bill	418 S	Fong, Kandy	499 S	Green, Eleanor	581 S	Hill Jr, Wesley
333 A	Drake, Joanne	419 S	Ford, Mike	500 A	Green, Jon B	582 A	Hillis, Robert L
334 S	Drexler, Marc A	420 S	Foss, Janice	501 A	Green, Mary	583 A	Himmelsbach, Robert M
335 A	Drummond, Doug	421 S	Foss, Rick	502 A	Green Jr, Ralph	584 A	Hina, Holly
336 A	Drysdale, David	422 S	Foster, Adrienne	503 A	Greenbaum, Gary	585 A	Hinz, Colin
337 A	Duarte, Fred	423 A	Fox, Crickelt	504 A	Greene, Lisa	586 A	Hipp, Scott
338 S	Duck, Darien	424 S	Fox MD, Teresa B	505 A	Gregory, Hugh Sinclair	1598 A	Hiramoto, Miho
339 S	Dunn, Gregory E	425 S	Frame-Gray, Nola	506 A	Griffin, Mike	587 A	Hisle, Debra M
340 S	Dunn, Linda J	426 S	Francis, Carolyn	507 A	Grillot Jr, Joseph G	588 A	Hitchcock, Chip
341 S	Dunn Jr, Thomas A	427 A	Francis, David R	508 A	Groat, Jim	589 A	Hitchcock, Lindsay A
342 A	Dupree, Joseph H	428 A	Francis, Steven	1576 A	Grosko, Stephen J.	590 S	Hoare, Martin
343 A	Durgin, Nancy A	429 A	Francis, Sue	509 A	Gross, Elizabeth	592 A	Hobbs, Hare
344 A	Duval, Chris	430 A	Frank, Michael	510 S	Gross, Merryl	591 A	Hobbs, Hare, Guest of
345 A	Duval, Kathryn	431 A	Franks, Michele	511 A	Grubb, Michael L.	593 S	Hodgkinson, Debbie
346 A	Dyar, Allyson M W	432 A	Franson, Donald	512 A	Gruen, Rev Richard P	594 A	Hoey, Dan
1640 S	Dyar, Curtis	1614 S	Fratz, D. Douglas	513 S	Grumme, Franz	595 A	Hoff, Gary
347 A	Dyar, Dafydd Neal	433 A	Frazier, Todd	514 A	Guidry, John H	596 A	Hofmann, Matthias
348 A	Dyer, Andrew R	434 S	Freas, Frank Kelly	515 S	Gunderson, Eleanor	597 S	Hofstetter, Joan
1639 S	Dyer, Robbi	435 S	Freas, Laura Brodian Kelly	516 A	Gunnarsson, Urban	598 A	Hoka, Sherlock
349 S	Eastlake, Jill	436 A	Frech, James R	517 S	Guon, David	599 S	Holik, Ronald F
350 S	Eastlake III, Donald E	437 A	Freeman, Barry C	518 S	Haas, Cliveden Chew	600 A	Hollingsworth, Randal Rae
351 S	Eastlake IV, Donald E	438 A	Freeman, H Denise	519 A	Haas, Ealasaid	601 S	Hollis, John A R
352 A	Echternacht, Gary	1636 A	Fregni, Giovanna	520 A	Haas, Liz	602 A	Holt, Melissa
1718 A	Edgecomb, Mary	439 A	Freitag, Lisa	521 S	Haas, Paul	603 A	Hopfner, John
353 A	Edgell, Elise M	440 S	Fremon, Pam	1686 A	Haberman, David	604 A	Hopkins, Priscilla A.
354 A	Edgell, Ross L	441 A	Freundel, Mark	522 A	Hagen, Jerry J.	605 S	Hopwood, Terry
355 S	Edison, Laurie	442 S	Freyer, John	523 A	Haldeman, Gay	606 S	Horgan, Michael
356 S	Edwards, Chris Logan	443 A	Friauf, Douglas	524 S	Haldeman, Joe	607 S	Horne, Eugenia
357 A	Edwards, Nancy	444 A	Friedman, Beth	525 A	Hamel, Marsha	608 S	Horton, Richard R
358 S	Effinger, George Alec	445 A	Friedman, David	526 A	Hamilton, Casey	609 S	Horvath, Gillian
359 A	Eide, Phyllis J	446 S	Frierson, Penny	527 A	Hamilton, Nora	610 S	Horvitz, Tom
360 A	Eisen, Janice M	447 S	Friesen, Stanley W	528 A	Hammar, Jonathan	1627 A	Hottenroth, Dan
361 A	Eisenberg, Lise T	448 A	Fullord, Lily	529 A	Hancock, D Larry	1628 A	Hottenroth, Dawn
362 A	Elderkin, Jacqueline T	449 A	Fuller, Frederic E	530 S	Hancock, Jody M	611 S	Houseman, Doug
364 A	Ellern, William B	450 S	Fulton, Cindy	531 S	Handzel, Cathy	612 A	Howard, Geri
365 A	Ellers, Marjii	451 A	Fulton, Kathy	532 S	Handzel, Jim	1662 A	Howenstein, Amy
366 A	Elliott, Russ	452 S	Fye, Larry	533 A	Hanlon, T R	613 A	Howlett, Craig K
367 S	Ellis, Kerry	1588 A	Gagne, Benita	534 S	Hansen, Marcie	614 A	Huckelbery, Tim
368 A	Ely, Ginie	1589 A	Gagne, Roland	535 A	Harness, Jack	615 A	Huckenpahler, J. G.
369 A	Endrey, Thomas A	453 A	Gahlon, Dean C	536 A	Harper, James S	616 S	Huckle, Cynthia A
370 A	Eney, Dick	454 A	Gallacci, Steven A.	537 A	Harrigan, Harold	617 S	Huff, Thomas
371 A	Ensling, Jean	455 A	Gallaher, David W	538 A	Harrigan III, Harold	618 S	Hughes, Jackie
372 A	Epstein, Louis	456 A	Galloway, Tom	539 S	Harris, Clay	619 S	Hull, Matthew G.
373 A	Erichsen, Kurt	457 S	Garb, Gordon	1508 A	Harris, George E.	620 A	Hulse, Charles R.
374 A	Ernst, Steffany	458 A	Garrison, Ken	540 A	Harris, Jonathan	621 A	Hunger, Jamie R
375 A	Erwin, James	459 S	Gaspar, Carson	541 A	Harris, Susan	622 A	Hurley, Brian
376 A	Eslinger, Joan	460 S	Gauthier, Joseph W.	542 S	Harrison, Callista	623 A	Illingworth, Tim
377 S	Estes, Wilma G	461 A	Gavelis, Maria	543 A	Harrison, Irene R	624 A	Imersheim, Chris
378 S	Eudaly, Judith Ann	462 A	Gbala, Helen	544 S	Harsh, Claudia	625 S	In't Veld, Robert
379 A	Evans, Paula	463 A	Gelb, Janice			626 S	Innis, John W
380 S	Everling, Michael	1631 A	Gentili, Karl S.A.			627 A	Inoue, Hiroaki

Boston in 2001



Is an SF story-teller
at the LA Worldcon
a "rat-con-teur"?!

MCFI, purveyors
of fine
Worldcons
for 21 years,
proudly offers
a bid for the
first Worldcon of
the 21st Century.
New century--
same old
quality.



Presupporting
memberships
are available
for \$8 U.S. &
include a
cloisonne pin.
Write us at:
Boston in 2001
P.O. Box 1010
Framingham,
MA 01701-0205

Noreascon 4

If it's not Boston in 2001,
it won't be Noreascon!

Progress Report One

628 A	Inoue, Tamie	1730 K	Kobayashi, Daughter of Yoshio	777 A	Lillian III, Guy H	859 S	Maulucci, Mary
629 S	Ishiyama, Toshiyuki			778 A	Lim, Marie	860 A	Maurer, Karl F.
630 S	Iwatake, Roy	1729 A	Kobayashi, Mrs. Yoshio	779 A	Linaweaver, Brad	861 S	May, Marlin
631 A	Jackowski, AnnMarie	1728 A	Kobayashi, Yoshio	1684 A	Lindsay, Eric	862 A	Mayer, Sally
632 A	Jackowski, Walter	708 A	Kobee, Sally A	780 A	Lindsay, Tamar	863 A	Maynard, Jeffrey D
633 A	Jackson, Catherine	709 S	Koehler, William F	781 A	Linneman, Mark A	864 A	Maynard, Richard
1704 A	Jacobson, Janice	710 S	Konkin III, Samuel E	1605 A	Liske, Warren R	865 S	McCombs, Cheryl
634 A	Jaffe, Saul	711 A	Konkol, Kenneth R	782 A	Litt, Elan Jane	866 A	McConnell, Frank
635 A	Jamison, Paul E	712 S	Konoya, Hiroshi	783 S	Liverette, Michael A	867 S	McCoy, Sean
636 A	Jansen, Phil	713 A	Korn, Daniel	784 A	Loftis, Janet L	868 A	McDaniel, Timothy A.
637 A	Jarrell, Ron	1561 A	Korp, Mike	785 A	Logue, Kathei	869 A	McGowan, James R
638 S	Jarvis, Charles	714 S	Korra'ti, R'ykandar	786 S	Lonehawk, Brendan	870 A	McGrain, Tim
639 A	Jazmyn	715 A	Koskie, Pam	787 S	Lonehawk, Patti	871 S	McGregor, Alayne
1697 A	Jein, Greg	1689 A	Kosuda, Ellen	788 S	Long, Caroline R	872 A	McKana Jr, John F
640 S	Jemison, Frankie	716 A	Kottkamp, Trarie	789 S	Long, Katherine C	873 A	McKee, Erin
641 A	Jencevice, Linda	717 A	Kovalcik, Rick	790 A	Long-Hemsath, Bonita	874 S	McKenna, Marjorie
642 A	Jencevice, Michael	718 A	Kramer, Edward	791 S	Loomis, Nancy	875 A	McMahan, John
643 A	Jenkins, Laura F	719 S	Krask, Paul	792 A	Lopez, Edward	876 A	McMahan, Susan K
1717 A	Jenkins, Stacey	720 A	Kravitz, Marian E	793 A	Lopez, James R	877 A	McManus, Sally
644 A	Jensen, Bill	721 S	Krentz, Laura	794 A	Lorentz, John	878 A	McMurrain, Althea
645 A	Jenson, Jo	722 A	Krolak, Jack P	795 A	Lorrah, Jean	879 S	McNary, Lucinda
646 S	Jeude, Samanda	723 A	Krupp, Judy	796 A	Lotz, Annette	880 S	McNary, Mark
647 A	Jewell, Mary Jane	724 A	Krupp, Louisa	797 A	Louie, Daniel	881 S	Meadows, Ronald
648 A	Jira, James L	725 A	Krupp, Rebecca	798 A	Louie, Gary	882 A	Meier, Wes
649 A	Johnson, Barbara N	726 A	Krupp, Roy	799 A	Love, J. Spencer	883 A	Meier, Wilma
650 S	Johnson, Dale	727 S	Kurdyla, Vincent	1661 A	Low, Danny	884 A	Meister, Dawn
651 A	Johnson, David W	728 S	Kurilecz, Diane M	800 S	Lowa, Brian K	885 S	Melder, A Zane
652 S	Johnson, Julie S	729 A	Kurtz, Dorothy	801 A	Lowerre, Jim	886 S	Melder, Grace
1671 A	Johnson, Keith	730 S	Kushner, David M	802 A	Lucas, James	887 S	Melius, Dave
653 A	Johnson, Robin	1615 A	Kwandrans, Stephanie	803 A	Ludwig, Gaye	888 A	Melle, Bill
654 A	Johnson, Sally A	1680 A	Kyle, David A.	804 A	Lunney, Frank	889 A	Melle, Sue
655 A	Jones, Lenore Jean	731 A	Kyle, Ruth	805 A	Lurie, Perrienne	890 A	Melnick, Linda
656 S	Jones, Mark K	732 A	Labonville, Suzanne N	806 A	Lyau, Bradford	891 A	Meltsner, Ken
1609 A	Jones, Marsha	733 S	Laczko, Valerie	807 A	Lynch, Dick	892 A	Meltzer, Lori
657 S	Jones, P. Quinnatt	1670 A	Lai, Robert C	808 A	Lynch, Keith F	893 A	Merlino, Mark
658 S	Jones, Wayne H	1602 A	Lampe, George Michael	809 A	Lynch, Nicki	894 A	Merritt, Scott
1575 A	Jordan, Roberta	734 A	Landan, Dr Stephen R	810 A	Lyons, Dennis	895 A	Meschke, Karen
659 S	Josenhans, Ken	735 A	Landan, Joshua	811 S	Lysaught, Joan	896 A	Meserole, Thomas A
660 S	Juozenas, Joan	736 A	Landan, Mrs Stephen	812 A	MacDermott, Bruce R	897 A	Meskys, Edmund R
661 A	Kaden, Criselda	737 A	Landis, Jim	813 A	MacDermott, Dana	898 A	Meskys, Sandra
662 A	Kaden, Neil E	738 S	Lando, Brian	814 A	MacIntosh, Robert J	899 A	Meskys, Stanley
663 S	Kadlecek, David J	739 A	Landry, Paul	816 A	MacLaney, Thomas	900 S	Metcalfe, Liz
664 A	Kafka, Anita	1596 A	Lane, Charles	815 A	Mackey, Susan	901 S	Metz, Claire D
665 A	Kahler, William T	1597 A	Lane, Joyce	817 S	Madden, JR	902 A	Metz, Paul
666 S	Kahn, Walter	740 S	Langford, Laura	818 A	Mahoney, Russell H	903 S	Miesko, Judy
363 A	Kane, Eileen M	741 A	Langsam, Devra M	819 S	Mainhardt, Ricia	904 S	Mikoluff, Crystal
667 S	Kappesser, Peter J	742 A	Lanoue, Susan	820 S	Maizels, John	905 A	Mildebrandt, Nancy E
668 A	Kare, Jordin	743 A	Larsen, Peter	821 A	Makita, Kazuhiko	906 A	Miller, Alan F
669 S	Kare, Mary Kay	1570 A	Larson, Aaron B.	822 S	Malcolm, Susan M	907 A	Miller, Arthur W
670 S	Karpierz, Joe	1692 A	Larson, Bob	823 S	Malik, Julia	908 S	Miller, Ben W
671 S	Karpierz, Sharon	1630 A	Larson, Ronald A.	824 S	Mallory, Benny	1618 A	Miller, Claire
672 A	Kasten-Lowerre, Lorinda	744 S	Larue, Candace	825 S	Mallory, Sara	909 S	Miller, Craig
673 A	Katayama, Robert S	745 S	Larue, Stephen M	826 A	Malmberg, Norwin	910 A	Miller, Dennis B
674 S	Katleman, David	746 S	Laskowski, George	827 A	Mangan, Lois H	911 S	Miller, Eleanor V
675 A	Kato, Keith G	747 S	Lasley, Stephanie	828 A	Mangan, Paul J	912 S	Miller, Sasha
676 A	Katze, Rick	748 S	Lasne, Francis Xavier	829 S	Mann, Frank P	913 A	Miller, Susan
677 S	Kaufman, Jerry A	1683 A	Lavender, Roy	1564 A	Mann, Jim	914 S	Minneman, Lynn I
678 A	Kaumeyer, Elika	749 S	Lawrence, Malt	1563 A	Mann, Laurie	915 S	Mirabella, T'An
679 S	Kaylor, Cheri	1693 A	Lawrence, Richard	1565 A	Mann, Leslie	916 A	Mitchell, Matthew G
1621 A	Keais, Debbie	1694 A	Lawrence, Victoria	1638 A	Mannes, Mike	917 A	Miñambres, Teresa C
1622 A	Keais, Jim	750 S	Lay, Toni	830 A	Manning, Sandra	918 A	Moffatt, June
680 S	Kee, Tom	751 S	Layton, Alexis	831 S	Mannion, Robert	919 A	Moffatt, Len
681 A	Keesan, Morris M	752 A	Lebowitz, Steve	832 A	Mansfield, John	1685 A	Moffet, K. V.
682 A	Kelley, Pamela	753 A	Lee, April	833 A	Mansfield, Marie-Noella	920 A	Mohapel Jr, Charles C
1629 A	Kelly, Mark	754 A	Leeper, Evelyn	834 S	Marble, Beth	921 A	Mohn, Susan
683 A	Kelly, Richard J	755 A	Leeper, Mark	835 S	Marble, Chris	922 S	Moir, Debby
684 S	Kemper, Bart	756 A	Leibowitz, Hope	1603 A	Markel, Christine	923 S	Moir, Lillian E
685 A	Kenderdine, Bonnie	1656 A	Leong, Henry	1655 A	Markowitz, David	924 S	Moir, Mike
686 A	Kent, Allan	757 S	Leong, Herb	836 S	Marks, Kimberly	925 A	Molloy, G Patrick
687 S	Keough, Elizabeth	758 A	Letson, Russell	837 S	Markunas, Patricia	926 S	Moore, David
688 S	Kerrigan, Michael J	1681 A	Lettow, Donna C.	838 A	Marston, Bonnie Alexandra	927 S	Moore, Diane
689 A	Kessels, Amber	759 S	Levin, Robert	839 S	Martin, Diane	928 S	Moore, Janis
690 A	Ketter, Greg	760 A	Levine, David	840 A	Martin, George E	929 A	Moore, Kenneth
1645 A	Kim, Alan	761 A	Levine, David	841 A	Martin, George R R	930 S	Moore, Perry Glen
691 A	Kimmy, Raymond	762 A	Levine, Sheila	842 K	Martin, Johanna	1677 S	Moore-Kyle, Franny
692 S	Kindell, Judith E	763 A	Levy, Benjamin M	843 A	Martin, Sue	1568 A	Moose, Chocolate
693 A	King, Deborah A	764 A	Lewis, Alice	844 S	Martin, William	931 A	Morales, Jeremy S
694 A	Kingsbury, John	765 A	Lewis, Sulford	845 A	Martin-Gerds, Elizabeth	932 A	Morman, Brian
695 A	Kingsbury, Judith	766 A	Lewis, Tony	846 A	Martinez-Burne, Dawn	933 A	Morman, Mary
696 S	Kingsley, Patrick A	767 A	Lieberman, Ben	847 A	Martz, Bruce	934 A	Morman, Melissa
697 S	Kirschenman, Gail	768 A	Lichtenberg, Gail	848 K	Martz, Eileen	935 S	Morningstar, Chip
698 A	Kirstein, Sabine	769 A	Lichtenberg, Jacqueline	849 K	Martz, Eleanor	936 S	Morningstar, Janice
699 A	Klein, Jay Kay	770 A	Lichtenberg, Salomon	850 A	Mason, Michael	937 A	Morrel, Anne C
700 S	Kliman, Lincoln W	771 A	Lieberman, Danny	851 S	Massoglia, Alice	938 S	Morris, Hilarie A
701 A	Knaak, Richard A	1586 A	Lieberman, Frank	852 S	Massoglia, Marty	939 S	Morris, Phillip L
702 S	Knapp, Kim L	1587 A	Lieberman, Morris T.	853 A	Matheny, Charles K	1230 S	Morris, Skip
703 A	Knauer, Michael	772 S	Lieberman, Paula	854 A	Mathews-Bailey, Gail E	940 S	Mortensen, Liz
704 A	Knight, Bill	773 A	Liebman, Michael	855 A	Matthews, Robert	942 S	Morton, Sharon Anne
705 S	Knopf, Arnold	774 A	Lien, Anton	856 A	Matthews Jr, Winton E	1707 A	Morton, Will
706 S	Knopf, Maryann	775 S	Lieven, Andre	857 S	Maudlin, Lynn	1708 A	Morton, Yvonne
707 A	Knowles, Martha	776 A	Lilienfeld, Rebecca	858 A	Maughan, Ian	943 A	Moscoe, Ellen N

L.A. CON III

944 A	Moscoe, Michael L	1027 A	Paul, Sara	1110 A	Rich, Dr. Teresa Jean	1196 A	Sbarsky, Guest of Sharon
945 A	Mozzicato, Susan E	1028 A	Paulk, Mark	1111 A	Richards, Mark	1197 A	Sbarsky, Sharon
946 S	Mulligan, Rikk	1029 A	Paulsen, Joanne	1112 A	Richardson, Kathy A	1198 S	Schaleen, Kenneth
947 S	Mumaw, Donnalyn	1030 A	Pavlac, Ross	1113 S	Richardson, Yvonne	1199 S	Scherer, Steve
948 S	Mumaw, Lorraine A	1031 A	Pavlat, Peggy Rae	1114 A	Richerson, Carrie	1200 A	Schilling, Ben
949 A	Munoz, Cherri L	1032 A	Pavrel, Jenevieve	1115 A	Rickart, Becky	1201 A	Schlofner, Mike
950 S	Murray, Doug	1033 A	Payne, Michael H	1116 A	Riel, Roberta T	1133 S	Schmeidler, Lucy
951 S	Murray, Pam	1034 A	Pearce, J W	1117 A	Riley, Connie L	1590 A	Schneider, Gene
963 S	NESFA,	1701 A	Pearce, Joe	1118 A	Ritch, Bill	1202 S	Schoulen, Herman
952 S	Nachman, Heather E	1035 A	Pearce, M A	1119 A	Ritter, Bruce	1203 S	Schreiber, Benjamin
953 S	Nakagawa, Bryce M	1036 S	Peel, Susan	1120 A	Ritter, Judith	1204 S	Schroeder, Sue
954 S	Nakashima, Lex	1037 A	Peirce, Douchka	1121 S	Rivers, David	1205 A	Schubert, Ann
955 A	Nathanson, David B	1038 A	Peirce, Hayford	1122 S	Robe, Corlis	1206 A	Schultz, Gail
956 A	Nathanson, Phillip M	1039 A	Pekar, Bonnie V	1123 S	Robe, Gary R	1207 A	Schweppe, Jane
957 A	Neagle, Robert	1040 A	Peiz, Bruce E	1124 A	Roberts, Carol	1208 A	Score, David
958 S	Neff, Julie	1041 A	Peiz, Elayne F	1125 A	Roberts, Jim	1209 A	Scott, Eric P
959 S	Neff, Randall	1042 S	Penrose, James K	1126 A	Roberts, John P	1210 A	Scott, Melissa
960 A	Nelson, Carl	1043 S	Perkins, Charles	1127 A	Robertson, Rock	1211 A	Scott, Peter
961 A	Nelson, Leslie	1044 A	Perkins, Gerald R	1128 A	Robin, Doris T	1212 S	Scrivner, Joyce K
962 A	Nelson, Michael R	1635 A	Perkins, Jr., Frank	1129 A	Robinett, Linda Louise	1213 S	Scroggins, Phillip L
964 S	Newmark, Craig A	1610 A	Persons, Kelly	1130 S	Robinson, Andrew	1214 A	Sears, Teri
965 S	Newton, Barry L	1045 S	Pesavento, Robert	1131 S	Robinson, Paul T	1215 S	Sefcovic, Fabian
966 S	Newton, Judith J	1046 S	Peterson, Linda	1132 S	Rodriguez, Sonia M.	1601 A	Seim, Dale
967 S	Newton, Meridel H	1047 S	Peterson, Polly Jo	1714 A	Roe, Diane	1216 A	Sessoms, Lee
968 S	Nicholas, B L	1048 A	Pettinger, Sandra G	1134 S	Roecker, Vega	1217 S	Sestak, Michael
969 A	Nicholas, Larry	1049 A	Pettinger Jr, Pierre E	1135 S	Roelker, Stephanie J	1218 S	Shallcross, Eliza
970 S	Nicol, Barbara	1050 S	Peltis Jr, Roy C	1716 A	Rogers, Jeff	1220 A	Shattan, Ariel
971 A	Niedbalec, John	1051 A	Pezzuto, Larry	1136 A	Rogers, John G	1221 K	Shattan, Arthur C. J.
972 S	Nikkel, Katherine K	1052 A	Phillips, Berni	1137 S	Rogers, Michael	1584 A	Shaw, Jerry
973 S	Nikkel, Shelagh	1053 A	Phillips, Chuck	1138 S	Rogge, Rebekah L	1222 A	Shawcross, William E.
260 A	Nincehelsler, Lori	1054 S	Phillips, Daryl L	1139 A	Rogow, Roberta	1644 A	Shectman, Nicholas
974 S	Niven, Larry	1055 S	Phillips, Karen	1140 S	Romine, Terry	1223 S	Sheffield, Vivian
975 S	Niven, Marilyn	1056 A	Phillips, Sue	1141 A	Rondeau, Guest #1 of Jim	1224 S	Sheller, Patricia M
976 A	Norman, Guest of Neil	1057 A	Pierce, Diane L	1142 A	Rondeau, Guest #2 of Jim	1225 A	Shepherd, Randall L
977 A	Norman, Neil	1058 A	Pierce, Samuel C	1143 A	Rondeau, Jim	1226 A	Shere, Howard
1613 A	Norris, Randy	1059 A	Pierce, Sharon	1144 A	Rondeau, Melody	1227 A	Sherman, Keith
941 A	Norton, Anne M	1608 A	Pilvinis, James	1145 A	Roper, Bill	1228 A	Shetron, Guest of Richard
978 A	Norton, Joyce	1060 A	Pinsker, Laurie	1146 A	Rose, Rob	1229 A	Shetron, Richard
1625 S	Norwood, Rick	1061 S	Platt, John	1720 A	Rose, Ruth	4 AG	Shibano, Sachiko
979 A	Novak, John J	1062 A	Plumlee, Gary L	1147 A	Rosenbaum, Arwen	3 AG	Shibano, Takumi
1219 A	Null, Merlin R.	1063 A	Podell, Barbara	1148 A	Rosenbaum, Stephanie	1232 S	Shibley, James
980 S	Nutt, Nancy	1064 S	Pohl, David	1149 A	Rosenberg, Robert	1616 A	Shiffman, Stu
1582 S	Nye, Jody Lynn	1065 S	Pohl, Laurie	1150 A	Rosenburg, Diane	1233 A	Shilling, Layne
1721 A	O'Brien, Elizabeth	1066 S	Pomeranz, John	1151 S	Rosenfeld, Sue-Rae	1234 S	Shimada, Charles T
1579 A	O'Brien, Terry	1067 A	Pontiac, Vena	1152 S	Rosenstein, Jack	1235 A	Shipman, Linda
981 A	O'Grady, Maria	1068 S	Poretzky, Jeff	1153 A	Rosenthal, Andrew	1236 A	Shoji, Joey
982 A	O'Grady, Thomas	1069 S	Porter, Andrew	1154 A	Ross-Mansfield, Linda	1237 A	Short, K Michiko
983 S	O'Rear, Karyn	1070 A	Portwood, Frank	1155 A	Roth, Jeannette	1238 S	Sicliari, Dan
984 S	O'Rear, Victor	1071 S	Pott, Kate	1156 S	Roth, Jennifer	1239 S	Sicliari, Joe
985 S	O'Riley, Rod	1072 S	Potter, D	1157 A	Roth, Leslie	1240 A	Siders, Ellen
986 S	O'Shea II, Christopher	1073 S	Pournelle, Alex	1158 A	Roth, Stefan	1241 A	Sieber, Renee
987 A	Oberg, Gerda K	1074 A	Powell, James E	1159 S	Roth-Whitworth, Kathryn	1242 S	Siegel, Kurt
988 A	Oberg, Margaret Ann	1075 A	Powell, Mary E	1160 S	Roth-Whitworth, Mark	1243 S	Siegling, Carol
1672 A	Odom Jr., James Carl	1076 A	Pozzo, Peter	1161 S	Rothstein, Allan	1244 S	Siegling, Eric
989 A	Ohlinger, Guest #1 of Jerry	1077 A	Pratt Jr, Robert B	1162 A	Rousey, Jim	1245 S	Siegling, Van
990 A	Ohlinger, Guest #2 of Jerry	1078 A	Priester, William E	1163 S	Roy, Eileen	1246 A	Sieler, Stan
991 S	Olanich, Cathy	1079 S	Prince, Mary	1164 A	Roy, Kenneth	1247 A	Sigel, Andrew
992 S	Olausson, Harry	1080 S	Proctor, Brian	1165 S	Rubasky, Mary	1248 A	Silber, Rachel
993 A	Olds, Chris	1081 A	Proni, Amy	1166 S	Rubasky, Tom	1249 A	Silva, Joseph
994 A	Oliver, Katherine	1082 A	Proni, Tullio	1167 A	Rubinstein, Peter	1634 A	Silverberg, Debbie
995 A	Oliver, Thomas W	1083 A	Prophet, Fred	1168 A	Ruff, John	1251 A	Silverberg, Karen Haber
996 A	Olmsted, Gene	1084 A	Provenzano, Lenny	1169 A	Ruh, Larry	1252 A	Silverberg, Robert
997 A	Olson, Mark L	1085 A	Pruitt, Timothy A	1170 S	Rush, Ed	1254 S	Silverstone, Murray
998 A	Olson, Priscilla	1698 A	Pschirrer, Annette M.	1171 A	Russell, Richard S	1255 S	Simicich, Nick
999 A	Olynyk, Frank	1086 A	Puller, Martin	1172 A	Ryan, Charles C.	1256 A	Sims, Pat
1000 A	Ong, Marisa	1087 A	Quirk, Nathalia	1173 A	Ryan, Mary C.	1257 A	Sims, Roger
1001 A	Ontell, Ron	1088 S	Quirt, Alan	1174 A	Sachtler, Ruth L	1258 S	Siros, Nina
1003 A	Ontell, Val	1583 S	Rabenn, Andrew J.	1175 A	Sacks, Robert E	1259 A	Siros, Willie
1005 A	Organ-Kean, Margaret	1089 S	Rahm, Aragorn	1176 A	Sakers, Don	1260 S	Skran Jr, Dale L
1006 S	Orlandella, Antony M	1090 A	Ramey, Timothy B	1177 A	Salter, David Ian	1261 S	Slate, Alexander
1007 S	Ornelas, Tommy	1091 A	Rankin, Donna	1178 A	Sanders, Drew	1263 A	Sloan, John
1008 A	Orr, Mary-Ann	1092 A	Ranson, Peggy	1179 S	Sanders, Gail	1264 A	Sloan, Kathleen A
1009 S	Ortiz, Joan Manel	1093 A	Ratti, David	1180 A	Sanders, Kathryn	1641 A	Smeds, Dave
1010 A	Oszko, Lance	1094 A	Ravitch, Alan L	1181 S	Sanders, Vince	1265 A	Smith, Carol J.
1011 A	Otten, Mary	1696 A	Rawn, Melanie	1182 A	Sanderson, Sue E	1266 A	Smith, Cheryl L
1012 A	Oulcalt, F. John	1095 A	Rebholz, Jeff	1183 A	Sapienza Jr, John T	1273 A	Smith, Dennis Lee
1013 S	Overton, Kathi D	1096 A	Rebholz, Maura	1184 A	Sargenti, Gene	1268 A	Smith, Henry Allen
1487 A	Paleo, Lyn	1097 A	Redden, Ben	1185 A	Sato, Izumi	1269 A	Smith, Joe
1014 A	Palmer, Susan K	1599 A	Redden, John	1186 S	Satterfield, Dale	1270 A	Smith, Kenneth L
1015 S	Paltin, Josephine A	1098 A	Reed, Dennis A	1187 A	Satterfield, Jim	1271 A	Smith, Laurence C
1016 A	Paolucci, Carol	1231 S	Reed, Jane	1188 A	Satterfield, Susan	1272 A	Smith, Leah Zeldes
1017 S	Pappas, William	1099 A	Reed, Wanda	1189 A	Saunders, Gordon	1274 S	Smith, Leslie H
1018 S	Parker, Bill	1100 A	Reid, Malcolm	1705 A	Saunders, Stephen	1275 A	Smith, Michael T
1019 A	Parker, Tony E	1101 S	Reitz, Susan	1190 A	Sauve, Michelle	1276 A	Smith, Nick
1020 S	Parris,	1103 S	Renton Jr, Neil H	1191 A	Savitzky, Colleen	1277 A	Smith, Ralph F
1021 A	Parry, Arwel	1104 A	Resnick, Carol	1192 K	Savitzky, Emerald	1278 S	Smith, Randy
1022 S	Parshall, Laurel	1105 A	Resnick, Laura	1193 A	Savitzky, Kathryn	1279 S	Smith, Rodford
1023 A	Parsons, Spike	1106 A	Resnick, Mike	1194 A	Savitzky, Stephen	1280 A	Smith, Sally
1024 S	Pastor, Valerie	1107 A	Rest, Neil	1195 S	Savvides, Anna	1281 A	Smith, Sean M
1025 A	Paterno, Mary	1108 S	Reutersward, Anders	1676 S	Sawyer, Alan B.	1282 A	Smith, Susan M.
1026 A	Patten, Frederick	1109 A	Reynante, Regina	1674 A	Sawyer, Robert J.	1678 A	Smith, Terri

Progress Report One

1102 A	Smith, Theresa Renner	1364 A	Teetor, Mary	1446 A	Wallis, Michael	1503 S	Williams, Kenneth L
1283 S	Smith, Timothy L	1365 S	Tepper, Matthew B	1447 A	Walls, Thom	1504 A	Williams, Perry
1284 A	Smith, Vicki	1366 A	Thagard, Sherilyn	1448 A	Walsh, Michael J	1505 A	Williams, Rondinella
1285 A	Smith, Victoria A	1367 A	Thale, Joy	1449 A	Walsh, Michael R.	9 AG	Willis, Connie
1286 A	Smith, Wes	1368 S	Therou, Philip	1450 A	Walton, Evelyn J	1507 S	Willis, Dorothy A
1267 A	Smith II, Richard H.E.	1369 S	Therou, Sharon	1451 A	Ward, Anthony D.	10 AG	Willis, Guest of Connie
1287 S	Smyth, Claire A	1370 S	Thokar, Gregory A	1452 A	Ward, Charles Douglas	1509 A	Willis, John F
1288 A	Snyder, Deborah M	1371 S	Thokar, Peggy	1453 S	Ward, Dalroy	1510 A	Willson, Karen
1289 A	Snyder, John F	1372 A	Thomas, Bill M.	1611 A	Ward, Michael J.	1511 A	Wilson, Jennifer
1290 S	Snyder, Sallijan	1373 A	Thomas, Guy W.	1454 S	Warren, Beverly	1512 A	Wilson, Marie Ellen
1291 S	Snyder Jr, Raymond E	1375 A	Thomas, Lois M.	1455 S	Warren, Bill	1513 A	Wilson, Thomas Luke
1292 S	Soden, Richard E	1374 A	Thompson, Haven	1456 A	Warren, Kenneth	1514 S	Winston, Alan
1293 S	Sokola, Joseph A	1377 S	Thompson, John	1457 A	Warren, Victoria	1515 S	Wintler-Cox, Rob
1294 A	Sommers, Tony	1695 A	Thompson, Keith	1577 A	Waterson, Joy	1516 A	Witham, Pat
1295 A	Sonezaki, Yoshiko	1376 A	Thompson, Rik	1578 A	Waterson, Rick	1517 A	Woehrie, Sally
1296 S	Sotomayor, Sylvia	1378 S	Thompson, Stella	1458 A	Wathne, Ming	1518 A	Wolansky, Taras
1297 A	Soukup, Martha	1379 A	Thomson, Amy	1459 S	Watkins, Jacqueline	1519 S	Wollenden-Steib, Gail
1298 S	Speer, Tony	1380 A	Thomson, Becky	1460 A	Watson, Carmen	1520 A	Wolf, Atom
1299 A	Spelman, Richard C	1381 A	Thorn, Anna Z	1657 A	Watson, Diane	1521 S	Woffman, Marv
1300 S	Spencer, Henry	1382 A	Thorn, Bob	1461 A	Watson, Kennita	1522 S	Woffman, Noel
1301 A	Spitzer, Sheldon	1383 S	Thorsen, John	1462 S	Watters, Suzanne	1523 A	Wolkoff, Lew
1302 A	Springs, Carol	1384 A	Tibbetts, Jennifer	1463 S	Watts, Eric L	1524 A	Wolkoff, Rosanne
1303 A	Sprinkle, G K	1385 A	Timm, Don A	1464 A	Wauford, Melissa	5 AG	Wollheim, Elsie B.
1304 A	Squires, Carol	1386 A	Timo, Sia	1465 A	Weber, Chris	6 AG	Wollheim, Guest of Elsie B.
1305 S	Stadler, Darren	1387 S	Timson, Katrina	1702 A	Weber, Jean	1527 S	Wong, Brian
1306 A	Stadler, Kim	1388 A	Tipton, Kimiye	1466 A	Wedell, David	1528 A	Wong, Kent
1307 A	Stadler, Mark	1389 A	Tomaino, Samuel J	1467 A	Weidner, Charles	1529 S	Wooster, Martin
1308 S	Staley, Dale	1569 A	Toomi, Juri	1468 A	Weidner, Steven	1530 A	Wright, Deborah Anne
1309 S	Staley, Jennifer	1390 S	Toop, Geoffrey	1469 A	Wein, Len	1531 A	Wright, Linda L.
1310 S	Staley, Sharyl	1391 S	Torres, Dineh Diana L	1470 A	Weinstein MD, Elliot	1612 A	Wright, Richard
1311 A	Standee, Kevin	1392 A	Townsend, Michael T.	1471 S	Weir, Connie	1648 A	Wu, William G.
1312 A	Stanley, John Alan	1393 A	Tracy, Jamie	1632 A	Weiskopf, T.K.F.	1532 A	Wuerz, Mary Alice
1313 A	Starke, Marcia	1642 A	Travis, David	1472 S	Weiss, Deborah	1533 S	Wulff, Robin
1314 A	Stearns, Adrienne	1394 A	Treleaven, Marie K.	1473 A	Weiss, Gail B	1534 A	Wunderlich, Forrest
1315 A	Stearns, Freda E	1395 S	Trend, Gregory	1474 A	Weiss, Guest of Gail B.	1536 A	Wygang, Lee
1316 A	Stearns, Robert E	1396 A	Trimble, Karen	1475 S	Weiss, Rick	1537 A	Yalow, Ben
1317 S	Steele, Mariann S	1397 S	Tripp, Galen A	1476 A	Weissinger, Robert	1538 A	Yamaoka, Ken
1318 A	Stein, David M	1398 S	Trocchia, Gregory	1477 A	Weller, W. A.	1002 S	Yarnot, Jan
1319 A	Stein, Diana Harlan	1399 A	Trojan, Bill	1478 S	Wells, Marc	1539 A	Yaworski, Veronica
1320 A	Stein, Jeff	1400 A	Trunk, Derek	1479 S	Wells, Patty	1540 S	Yeager, Kathryn A
1321 A	Stein, Michael P	1401 A	Tucker, Nancy	1480 A	Wells, Roger	1541 A	Youden, John
1322 S	Stephens, Monica	1402 A	Turek, Leslie J	1574 A	Wenn, John	1715 A	Young, Candace
1323 A	Stern, Alison	1667 A	Turner, Pat	1481 A	Wenzel, Ralph	1542 S	Young, Diane E
1324 S	Stern, Edie	1403 A	Tutihasi, Laurraine	1482 A	Wenzel, Sharon	1543 S	Young, Jennifer
1325 A	Stern, Ioanna L	1404 S	Uchida, Hideo	1483 S	Westhead, Kathy	1544 S	Young, Jim
1326 A	Stern, Michael J	1405 S	Uchida, Keiko	1484 A	Wexford, Marye Lynn	1545 S	Young, Sandra
1327 A	Stem, Tom	1406 S	Ulowetz, Joseph H	1485 S	Wheeler, Kenneth	1546 A	Yule, Kate
1328 S	Steward, James	1407 S	Uransy, Nora	1486 A	White, Donya Hazard	1547 A	Zablotny, David
1329 S	Steward, Suzette	1408 A	Urban, Michael	1 AG	White, James	1682 A	Zakem, Joel D.
1330 A	Stevens, Jon	1409 S	Uttke, Susan	1719 A	White, Julie	1548 A	Zaretsky, Graham
1700 A	Stevens, Milt	1410 S	Valada, Christine	1488 S	White, Mel	1549 A	Zarlow, Willow
1331 S	Stevenson, Jean L	1420 A	Van Deussen, David J	2 AG	White, Peggy	1550 S	Zeglin, Albion M
1567 A	Stiles, Elaine	1412 A	Van Dorn, Gretchen	1490 A	White, Phyllis	1551 A	Zeiger, Barry
1566 A	Stiles, Steve	1413 A	Van Lydegraf, James K	1491 S	Whitley, Eva C	1552 A	Zelin, David A.
1332 A	Stirling, Janet	1414 A	Van Name, Mark L.	1492 A	Whitman, Marc	1553 A	Zelin, Guest of David A.
1333 A	Stirling, S M	1415 A	Van Name, Mary Anne	1493 S	Whitmore, Tom	1554 A	Zellich, Michelle
1334 S	Stokes, Keith	1416 S	Van Toorn, Angeliqe	1494 S	Wickham, Malinda	1555 A	Zellich, Richard W
1335 A	Stoller, Peter	1417 S	Van Toorn, Kees	1495 A	Widmer, John	1556 S	Zellmann, Mercy
1591 A	Stone, Willard	1418 S	Van Wey, Timothy K	1496 A	Wiener, Robert K.	1557 S	Zellmann, Summer
1336 A	Straf, Samantha Star	1411 A	Van der Putte, Larry	1497 A	Wilbanks, Caran	1600 A	Zenk, Margo
1337 S	Strandberg, Lars	1253 S	Vande Bunt, Mike	1498 A	Wilcoxon, Joseph	1558 A	Zeres, Zena M
1338 A	Strauss, Erwin S	1419 A	Vandenbergh, Patricia Ann	1499 S	Wilkes, Mark	1559 A	Zetterberg, Julie A
1339 A	Strauss, Rich	1421 S	Vargo, Anna L P	1500 S	Willauer, Marlene	1560 S	Zeve, Steven Joel
1340 S	Strickland, Sheila	1422 S	Vaughan, Bill	1501 A	Williams, Chris L	1506 A	Zink, David S.
1341 S	Stroffolino, Maria	1423 S	Vaughan, Mary	1502 S	Williams, Edith T		
1342 S	Strother-Vien, Leigh	1424 A	Veal, Tom				
1343 A	Strub, Bernard L	1425 S	Vela, Larry				
1344 A	Strub, Deborah K	1426 A	Veldhoen, Jan				
1345 S	Stuckey, Lindalee	1427 A	Ventura, Greg				
1346 A	Sutherland, James L	1428 A	Vibber, Brion				
1347 S	Swain, Alan	1429 A	Vibber, James C				
1348 A	Swanson, Anders	1647 A	Vibber, Kelson				
1666 A	Swedberg, Donna J.	1430 A	Vibber, Lee W				
1349 A	Sweeney, Peggy	1431 S	Virzi, Dennis				
1350 S	Szczepaniak III, Joseph B	1432 S	Virzi, Pat				
1351 S	Szczesuil, Timothy	1433 A	Vitti, Bonnie				
1726 A	Tachibana, Manami	1434 A	Vogel, Allyn K.				
1727 K	Tachibana, Rie	1435 S	Vogl, Thomas P				
1725 A	Tachibana, Yoshiaki	1436 S	Vohl, Thomas				
1352 S	Tacouni, Lorraine	1437 S	VonBraskat-Crowe, Linda				
1353 A	Tait, Janet	1438 A	Vosburgh, Jay				
1354 A	Takeuchi, Shinsuke	1439 A	Waggott, John L				
1355 A	Tallan, Carol	1440 S	Wagner, Bill				
1356 A	Tallan, Michael	1441 A	Wald, Bette				
1357 A	Tani, Kousyu	1442 A	Wald, R. E.				
1358 A	Tate, James	1443 A	Waldman, Jacob M				
1359 A	Taubeneck, Susan	1262 A	Walker, Gail				
1360 A	Taylor, A. R.	1525 A	Walker, Judy				
1361 A	Taylor, Charlene	1526 A	Walker, Richard				
1362 A	Taylor, Kathy	1444 A	Wallbank, Mary				
1363 A	Taylor, Sheri	1445 A	Wallbank, Tom				

INDEX TO ADVERTISERS	
Baltimore in 1998 -----	7
Margarita Jell-O -----	10
Intersection -----	13
A Wealth of Fable -----	14
ConAdian -----	17
Boston in 2001 -----	21

FANTASY SHOWCASE TAROT DECK



85 ARTISTS !

**LAST FEW BOXES OF THE 1981
LIMITED EDITION**

\$25 INCLUDING POSTAGE

**FROM: ELAYNE PELZ
15931 KALISHER ST.
GRANADA HILLS, CA 91344**





Deadline!

The deadline for converting your membership from Supporting/Voting to Attending via your Presupporter's Grey Rat Stamp Book is

August 15, 1994

This deadline is also the last date for Voters who were NOT Presupporters to convert at the \$40.00 rate

As of August 16, the new rates go into effect, and converting from Voting to Attending will cost \$55.

Also as of that date, Presupporters will receive a flat \$5.00 discount, no matter how many Rat Stickers they have.

If you have not converted, and have 20 Stickers, mail your Rat book to the con P.O. by August 15th. (If you have less than 20 but more than 5, mail your book and a check for \$40 minus the number of stickers.)